

National Safety

Published by:
The Safety First Association

Supporting Associations:

- The Institute of Safety Management (IOSM)
- South African Personal Equipment Marketing Association (SAPEMA)
- Association of Construction Health and Safety Management (ACHASM)
- Southern African Institute for Occupational Hygiene (SAIOH)
- South African Qualification and Certification Committee (SAQCC Gas)



ISSN: 0028-0097

March/April Volume 77 Number 2



Nomex.

www.dpp-europe.com | Tel: +27 11 218 8600



Tyvek.



YOUR TRUSTED PARTNER IN SAFETY

ONE PROVIDER FOR ALL YOUR LOCALLY MANUFACTURED SAFETY FOOTWEAR NEEDS.

With a number of leading brands under one umbrella, each catering to the various needs, applications and budgets of the PPE market, we have a solution for every industry.



A comprehensive range covering Lightwear, Heavywear, Extremewear and paramilitary applications.



A purpose-built range for specialist applications.



An economical and reliable brand targeted at those on a budget and contract workers.



A leading brand of PVC and Polyurethane gumboots with superior quality which meets international standards.



An economical, double density PU/Rubber range for highly abrasive environments.



The range offers 4 categories of footwear catering to the needs of those working in light and heavy industrial environments; namely: comfort, slip-resistance, torsion control and general safety.



An all-female range designed specifically for women who work in light and heavy industrial environments.



BBF Safety Group is the leading and **largest safety footwear manufacturer in Africa**



Locally manufactured (South Africa)



We have over **200 years' combined experience**

T: +27(0) 31 710 0400 | E: info@bbfsafety.com | www.bbfsafety.com

National Safety



March/April 2017 - Volume 77 Number 2

CONTENTS

FEATURE ARTICLES

Recognising intoxicated employees at the workplace and understanding its negative effects .12

Spending 3 years on assignment at DuPont Switzerland14

Alcohol and access control15

Strengthening fire safety in Nigeria20

Flirting with danger28

Lockout and tagout made simple30

Providing 2 decades of service to the industry32

A leader in OHS consulting and training39

Ensure your church has a safety and security emergency response plan40

Speedy resolutions to emergency situations43

GAS SAFETY

  
 Gas safety and compliance summit36

LPG - challenges and solutions36

Installation of evaporative cooling system37

CONSTRUCTION SAFETY


ACHASM

Tuberculosis and the construction sector34

PERSONAL PROTECTIVE EQUIPMENT

Cover Story: DuPont™ Nomex® marks first 50 years of enabling endless possibilities4

Risk Sheet - Asbestos - a natural fibre5

Important announcement on hearing protection Change to hearing protection equipment certification markings6

Four steps to combat hearing loss: the silent epidemic8

Brand of the century - uvex stands up to comparison10

Water has its limitations - The alternative solution to emergency decontamination42

New styles for the Rebel range of work boots - A trusted brand for more than a decade48



SAPEMA supports hearing-impaired children ...19

OCCUPATIONAL SAFETY



IOSM

Message from the President23

Draft ergonomics regulations24

Workshop discusses the Occupational Certificate: Occupational Health and Safety Practitioner25

Pesticides in agriculture26

OCCUPATIONAL HYGIENE



SAIOH

News from SAIOH26



Cover Picture:
See page 4

Participating associations / organisations / institutes with National Safety and the Safety First Association



Editor's Comment

April is an important month for the occupational health and safety practitioner, because on the 28th, ILO marks the World Day for Safety and Health at Work. The aim being to promote the prevention of occupational accidents and diseases globally. This campaign is aimed at raising the awareness of work related injuries, diseases and fatalities by focusing international attention on these challenges, and on the emerging trends in the field of occupational safety and health. In many parts of the world, national authorities, trade unions, employers' organisations and safety and health practitioners organise activities to celebrate the date. We in South Africa should follow this trend.

The end user of PPE in South Africa has become used to and educated about the SABS markings on certain products, such as hearing aid devices, but now, with changes in the use of testing laboratories, the end user will have to learn the meaning of new markings. An important announcement explains this on page 6.

Our article "Hearing Loss - the silent epidemic" emphasises that because hearing loss happens slowly over time, by the time this disability starts impacting on life, it is too late to reverse the symptoms. However, with the right protection, hearing loss caused by environmental noises can be avoided.

Dr Bill Pomfret discusses security in churches - although he does focus on places of worship, these problems can also occur at the workplace. Safety officers must ensure that

their organisations have a firearms policy, with teams trained to handle such situations should they arise, as well as staff who have the correct first aid training to be able to treat injured personnel after an incident.

In this issue you can also enjoy reading about Ajen Maharaj's 3 year assignment in Switzerland. And, Rob van Hemert's experience at Shell Refinery in Durban when a bitumen column blew its top is another enjoyable read.

Alcohol consumption and drug abuse remain a societal problem resulting in some workers being intoxicated while at work. According to the regulations, neither alcohol nor drugs are allowed at the workplace. Although most employers are aware of the inherent dangers and may think they have the situation under control, accidents are often caused by intoxicated workers. In reality, only with the right testing equipment at the workplace can companies make sure that their workers are free of drugs and alcohol when they enter the workplace.

Claire Deacon explains in her article that pulmonary tuberculosis (PTB) is a communicable disease, and must be treated to stop the infection from spreading.

In this issue, we wish HASLAC a very happy 20th birthday. Started 2 decades ago by Louis Taljaard, we have seen this company grow from strength to strength, and we look forward to celebrating its 20 years in service with its new and modern image.

Debra

MANUFACTURERS AND DISTRIBUTORS OF PERSONAL PROTECTIVE EQUIPMENT AND SAFETY WEAR



SAFECO

SAFECO SAFETY CAP **SAFECO SAFETY HAT** **LAMP BRACKETS** **BRANDING SOLUTIONS**

FACESHIELD **CLIP ON FACESHIELD** **WELDING HELMET** **CLIP ON WELDING HELMET**

CHECK OUT OUR FULL RANGE OF SAFETY PRODUCTS: WWW.SAFECOSAFETY.CO.ZA
18 Wattle Road, Newlands, Johannesburg, Gauteng, South Africa. T: 011 477 0190/2/3 F: 011 477 0420 E: safeco@icon.co.za



National Safety is published by the Safety First Association and is the official journal of

- The Institute of Safety Management (IOSM)
- Southern African Protective Equipment Marketing Association (SAPEMA)
- Association of Construction Health and Safety Management (ACHASM)

National Safety is supported by:

- Southern African Institute for Occupational Hygiene (SAIOH)
- South African Qualification and Certification Committee for Gas (SAQCC GAS)

National Safety incorporates:

- Occupational Safety and Health
- Personal Protective Equipment
- Corporate Risk Management
- Occupational Hygiene
- Gas Safety

Editor: Debbie Myer
 Production Editor: Lindsay Myer
 Chairman: George Browse
 Vice Chairman: Leighton Bennett
 Marketing & Subscriptions: Maureen Schwegmann
 Admin Manager: Bruce Schwegmann
 Committee members: Leighton Bennett
 Stewart Shapiro
 Wensley Misrole
 George Browse
 Debbie Myer

Subscriptions / Administration / Marketing / Promotions
 3 Kwartel Street Vorna Valley, PO Box 321 Halfway House 1685
 Tel: + 27 11 701-5054 Fax: 086 684 2664
 E-mail: admin@safety1st.co.za

Advertising & Editorial
 Delinds Publications cc
 12 Delta Road, Blairgowrie, Randburg,
 PO Box 72366 Parkview 2122
 Tel: + 27 11 886-5985 Fax: +27 11 886-1332 Cell: + 27 83-266-6662
 E-mail: delinds@mweb.co.za

Copyright: 2017 Material appearing in this issue may not be reproduced without the permission of the editor or publishers in any form whatsoever. The Safety First Association is a non-profit making, privately supported, public service organisation which aims to prevent accidents by promoting an awareness of accident situations as they exist in day-to-day living amongst members of the community. The Publishers and Editors are not liable for any damages or loss incurred as a result of any statement contained in this magazine. Whilst every effort is made to ensure accuracy in this publication, neither the Publishers nor Editors accept any responsibility for errors or omissions in the content and reserve the right to edit all contributions. The views expressed in this publication are not necessarily those of the Publishers or Editors.

Master Lock®

SELECT MASTERLOCK ZENEX® SAFETY PADLOCKS

Optimal safety padlock designed exclusively for Lockout/Tagout. Distinctive ZENEX® Safety padlock is durable, standardised, substantial and identifiable for OSHA 1910.147 compliance. Stands up to chemicals, temperature extremes and is UV stable.

- Temperature tested from -47° to 177° C
- Excellent chemical resistance
- Excellent corrosion resistance
- UV stable
- Non-conductive nylon shackle option
- Marine grade 316 stainless steel shackle available
- 4.6mm or 6mm shackle diameter options
- No silicone used in padlock
- Restricted safety keyway
- Over 101 000 unique safety key codes available
- Over 1 million possible codes with optional key cylinders
- Keyed Different, Keyed Alike and Master Keyed options
- Key retaining – ensure padlock is not accidentally left unlocked
- Available in 9 colours
- Body sides and face can be laser engraved for permanent identification
- Sealed keying system ensures your safety lockout system stays pure by preventing haphazard re-keying and the accidental introduction of duplicate key codes
- Includes one key to ensure compliance with OSHA guideline of:



1 employee, 1 padlock, 1 key



PROTECTING YOUR PEOPLE, PRODUCTION, PROFITS ... PEACE OF MIND.

IB McIntyre & Co. 021 511 6104



DuPont™ Nomex® marks first 50 years of enabling endless possibilities



DuPont Protection Solutions has announced that it is kicking off the 50th anniversary of DuPont™ Nomex®, an inherently heat- and flame-resistant fiber used to help provide protection to millions of people and critical processes worldwide.

NOMEX® NEVER QUIT™

A new brand platform, Nomex® Never Quit™, was developed to coincide with the 50th anniversary.

Never Quit™ exemplifies the spirit of the heroes and innovators around the

world who rely on the unparalleled protection of Nomex®, while underscoring the DuPont commitment to continuous innovation.

NOMEX® BRAND

Nomex® brand fiber is used across a diverse range of applications, due to its unique combination of flame protection, durability and mobility.

Nomex® is used also in apparel worn by military pilots and combat vehicle crew; auto racing drivers, pit crew members and track officials; and

NOMEX® industrial workers at risk from flash fire and electric arc hazards.

50 YEARS

NEVER QUIT.™ Its inherent flame resistance combined with high levels of electrical, chemical and mechanical integrity make Nomex® ideally suited for a broad range of electrical insulation applications.

Manufacturers of transformers, generators, motors and other electrical equipment rely on the unique combination of Nomex® properties to help optimise performance, increase reliability and extend the service life of their own products.

Honeycomb composites made of Nomex® can be found in a wide range of aerospace applications - from aircraft cabin floors, overhead bins and bulkheads to landing gear doors, engine nacelles, helicopter rotor blades and much more.

The inherent flame resistance, lightweight strength and durability of honeycomb composites made of Nomex® help address the stringent safety standards and fuel efficiency requirements of commercial aircraft.

For further information, please contact:

Dharmesh Lakmidas: 072 098 0791

Tel: + 27(11) 218 8686

Email: Dharmesh.Lakmidas@DuPont.com

Risk Sheet

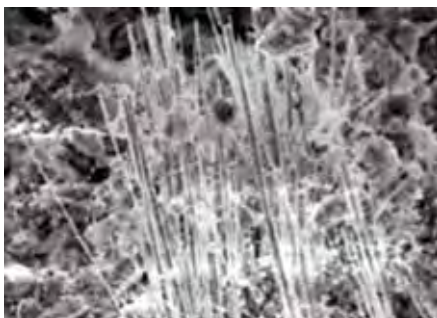
Asbestos - a natural fibre

Asbestos is a material with numerous qualities which was used on a massive scale before being shown to be highly toxic. Although asbestos is now banned in South Africa and other countries, it can still be found in many buildings and machines. The legacy of asbestos is hidden in various shapes and forms and will remain with us for many years to come, threatening lives at home and at work.

Helping to keep workers in such environments safe, protective coveralls made of DuPont™ Tyvek® can provide durable, comfortable and robust protection against asbestos fibres. Protecting workers from risks related to exposure to asbestos at work.

UNDERSTANDING THE DANGERS OF ASBESTOS

Asbestos is the common name for several naturally occurring fibrous silicate minerals. Asbestos fibres are very heat resistant and strong and were used for many years in thermal insulating materials such as laggings and coatings, floor tiles, roofing, asbestos cement products, electrical insulating materials as well as vehicle clutch and brake linings.



Asbestos fibre

DUPONT™ TYVEK® - DURABLE AND ROBUST PROTECTION AGAINST FINE PARTICLES AND FIBRES

Protective coveralls made of DuPont™ Tyvek® such as Tyvek® Classic Plus and Tyvek® Classic Xpert provide an excellent barrier against airborne particles (Type 5).

When comparing their barrier performance with other Type 5 suits made of MPF (Microporous Film) and



SMS (Spunbond / Meltblown / Spunbond), the models made of Tyvek® show a significantly lower Average Total Inward Leakage (TILavg) according to EN ISO 13982-2* with an average value of less than 1%. The Type 5 product standard allows for an inward leakage of up to 15% in 8 out of 10 suits tested.

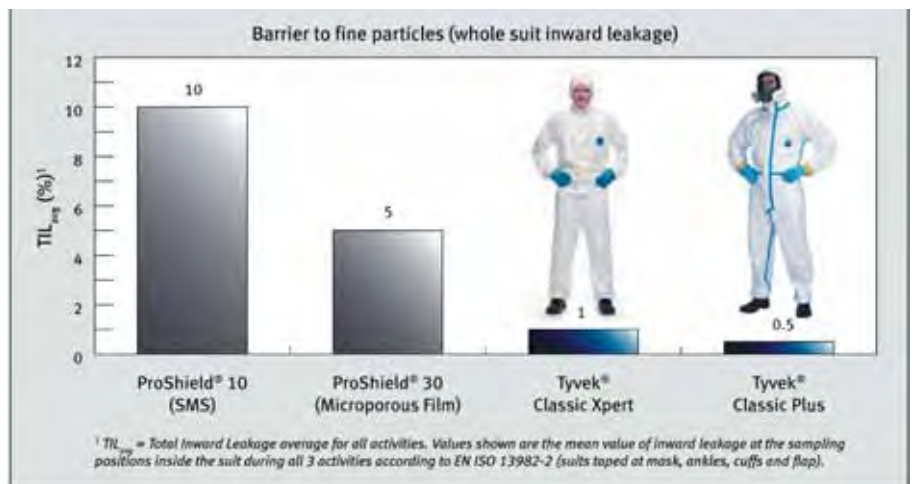
CHOOSING APPROPRIATE PROTECTIVE CLOTHING

- High particle barrier (material, seams)
- Smooth surface to prevent particles from adhering to the garment

- Tight fit at arm and leg openings (elasticated cuffs and ankles)
- Compatible with additional PPE (masks, goggles, gloves)
- Comfortable to wear, high freedom of movement

Need help finding and selecting chemical protective clothing?

Contact: Loren Pearson: 082 377 6765
Tel: 01 218 8600 Email: loren.pearson@dupont.com
www.safespec.dupont.co.uk



IMPORTANT Announcement on Hearing Protection

Change to hearing protection equipment certification markings



SABS SOC the SANS/SABS Certification Authority notified South African manufacturers of hearing protectors which are Mark holders during 2015/2016 that they were not able to renew SABS/SANS Certification marks of approval for hearing protectors and would be withdrawn from the current holders effective on date of expiry.

However, this does not mean that South African manufactured hearing protection is no longer tested or no longer safe to use.

On the contrary, South African manufactured hearing protection will continue to enjoy safe and high standards, with manufacturers now getting their products tested at international ILAC accredited laboratories to EN standards of approval.

EN Standards for hearing protection

EN 352-1 : 2002 Ear muffs

EN 352-2 : 2002 Ear plugs

EN 352-3 : 2002 Ear muffs attached to a safety helmet

EN 352-4 : 2002 Ear muffs attached to a safety helmet (Amended 2006)

EN 352-5 : 2002 Active noise reduction ear muffs

EN 352-6 : 2002 Ear muffs with electrical audio input

EN 352-7 : 2002 Level dependent ear plugs

EN 352-8 : 2002 Entertainment audio ear muffs

MANUFACTURERS AND DISTRIBUTORS OF PERSONAL PROTECTIVE EQUIPMENT AND SAFETY WEAR

SAFECO **uvex** **HOWARD LEIGHT** **Dromex**

CHECK OUT OUR FULL RANGE OF SAFETY PRODUCTS: WWW.SAFECOSAFETY.CO.ZA
18 Wattle Road, Newlands, Johannesburg, Gauteng, South Africa. T: 011 477 0190/2/3 F: 011 477 0420 E: safeco@icon.co.za



Made to fit **your** ears.



Product Features:

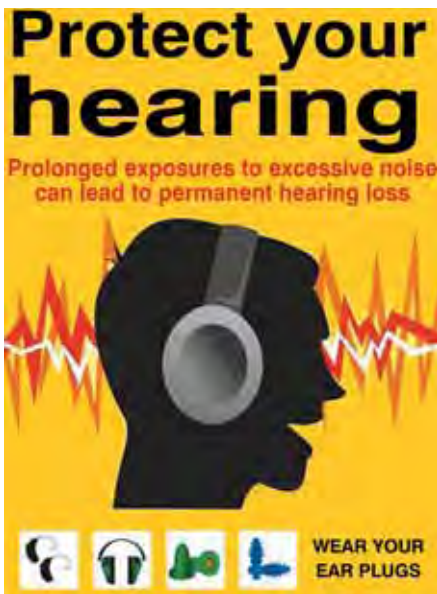
Comfortable & Durable

Value for Money

Hygienic & Easy to Clean

Hearing Conservation Programme

**Protecting
people's hearing
since 1992**



Four steps to combat hearing loss : *the silent epidemic*

just followed these few easy steps.”

STEP 1:

Wear hearing protection

The most important step to preventing hearing loss is to wear hearing protection.

“There are many great hearing protection options, but sometimes it’s a challenge to know which to choose and how and when to wear it correctly,” says Wells.

“Hearing protection is now available that is comfortable, fits well, and includes options to enhance communication - like microphones and two-way radio connections for people who need them.”

STEP 2:

Be mindful around the clock

Sounds louder than 85 decibels (dBA) are more common than people might think.

Prolonged exposure to these high-level sounds can permanently damage your hearing, and cause ringing in the ears, along with other symptoms. Most people don’t carry decibel meters, so it’s good to know where those sound levels can occur. See table 1.

Hearing these sounds occasionally, for a limited time, isn’t a major threat to hearing. But repeated exposure to loud sounds can cause hearing damage over time. Many people – like mine

Table 1. Occurrence of sound levels

Attending a football game	(100 to 120 dBA)
Using a leaf blower or chainsaw	(95-120 dBA)
Riding a motorcycle	(80-110 dBA)
Using a lawn mower	(82-103 dBA)
Attending a rock concert	(90-120 dBA)
Listening to a personal music player	(75-114 dBA)
Shooting firearms	(140 to 165 dBA)
Watching a movie at the theatre	(72-104 dBA)

workers, police officers, construction workers, farmers and others, work in noise that is 85 dBA or higher every day on the job.

As a result, noise-induced hearing loss is one of the most common occupational diseases and the second most self-reported occupational illness, according to National Institute for Occupational Safety and Health.

STEP 3:

Reduce the volume or increase the distance

Work-related noise might be unavoidable, but many times, you can be in control of the noise around you. Whenever possible, select quieter vacuums, chain saws, leaf blowers, power tools, etc.

Also, be aware that the volume controls on portable entertainment devices can exceed 110 dB – levels that may be hazardous if you listen for many hours a day. Lower the volume and limit how long you listen to them.

If you aren’t able to turn down loud sounds you encounter, take a few steps back from the source of the loud sound. Even a few metres of distance between you and a loud sound can lower the decibel levels that hit you.

Noise-induced hearing loss happens slowly over time, so the right protection today can make a big difference tomorrow.

Make a commitment to wear hearing protection so you can continue to enjoy all the sounds you love.

Reprinted with thanks from Protection Update - an e-newsletter with the aim of informing users, specifiers and purchasers of personal protective equipment, and those who regulate it.

Visit the ISEA website at www.safetysite.org



An estimated 275 million people across the globe can’t hear clearly all the sounds they love. These people suffer from hearing loss, which the World Health Organization lists as the number one sensory disability in the world.

Some people never had their hearing, as they were born deaf, but with the majority, something happened along the way that took it from them. Infectious diseases like meningitis, measles, mumps and chronic ear infections, as well as head and ear injuries, and aging can all contribute to hearing loss.

But perhaps the most common cause is excessive noise exposure. Noise can rob people of their hearing. Whether it’s a one-time exposure to an intense, “impulse” sound, like gunfire, or by repeated exposure to loud sounds over time, like machinery at work.

The effects of hearing loss extend well beyond having to turn up the television.

It strains a person’s ability to understand conversations, which can cause problems and misunderstandings at work and at home.

Hearing loss also leads to isolation from family, friends and the environment.

“The good news is that noise-induced hearing loss is preventable,” says Dr Laurie Wells, audiologist in 3M’s hearing protection business. “So many people could be spared from it, if they

grange

PERFORMANCE WORKWEAR

TOTAL PROTECTION! with the soft shell range by grange

Designed by the best and hand-picked for the Harsh South African working environment, grange offers you the most affordable hand protection.

CUT RESISTANT GLOVES

Our cut resistant range of gloves offer up to a cut level 5 EN rating, giving you a dexterous and durable glove that is guaranteed to reduce your glove usages in the workplace.

Our **CUT ABRASIVE PRO** is built to outlast almost anything. These gloves offer peace of mind when working with sharp materials in the workplace.

Featured gloves left to right:
CUT ABRASIVE PRO HP5620C | **ANTI CUT 5 GLOVE HP10214** | **SUPA GRIP HP5653**



Designed specifically for mechanical application, our mechanical handling gloves cater for a range of environmental needs ranging from wet and dry applications where additional grip is required, to suitable protection and dexterity.

MECHANICAL HANDLING GLOVES

Our **MECHANIC-X** glove is our most cost effective offering in this range. Being a black on black glove ensures a longer life span as users only dispose of dirty gloves...

Featured gloves left to right:
MECHANIC-X HP56547 | **SUPA HANDLER HP5652**



BREATHABLE GLOVES

Our breathable gloves are designed for all day and prolonged use that will ensure that you are comfortable and perspiration free.

Both the **PRO-GRIP** and **DEXI-PRO** feature open cell technology that reduces hand fatigue and discomfort, the absorbing coating gives additional grip and a perfect fit for all hand sizes.

Featured gloves left to right:
PRO-GRIP HP5655G | **DEXI-PRO HP 5656**



Brand of the century

uvex stands up to comparison

In order to gain a neutral assessment of its performance, uvex does not shy away from direct comparisons and regularly participates in competitions and benchmark projects.

In the past few years, the company has been presented with a whole host of prizes and awards.

These testify to uvex's innovative strength in technology and design.

Deutsche Standards (German Standards) selected uvex as a "Brand of the Century", with its ski goggles (2009) and safety eyewear (2016) representing an entire product category.

uvex has emerged as one of the most innovative small and medium-sized

AWARDS 2012 - 2016



companies in Germany and has been awarded the TOP 100 quality seal on a number of occasions.

This included winning in the following categories: "Innovation marketing" (2009) and "Innovative processes and organisation" (2011) as well as being the overall "Innovator of the year" (2013).

Prestigious awards including the "iF product design award", the "Red Dot Design Award" and the "German Design Award" confirm that our products meet the highest demands for shape and design as well as proving that functional products can also look good.

Employer



uvex pheos



uvex pheos



uvex u-cap sport



uvex pheos cx2



uvex pheos alpine



uvex u-sonic



uvex astrospec 2.0



uvex i-3



uvex

MEMBER OF **SAPEMA**

UVEX Safety South Africa (Pty) Ltd

uvex safety (Durban) Phone: +27 (31) 569 6780 E-Mail: info@uvex.co.za
uvex safety (Pretoria) Phone: +27 (12) 345 6656 E-Mail: safety@uvex.co.za



Alcohol and Drug testing specialists

Industry leaders for over 40 years, find out why over 5000 businesses trust our products and expert level support in policy development, legal advice and after sales service

High speed testers capable of testing high volumes of people at site entrance/exit points and portable instruments with digital readouts for use at remote sites providing immediate printed evidence.

NEW



BREATH TEST KEY CABINET

Breathalyser key management system. Integrated key cabinet to ensure drivers take keys and return them sober. Reports are drawn automatically to show records of key movements. Solutions for 10 to over 540 keys.

AlcoBlow® Rapid Test

Strongest and fastest breath alcohol tester on the market. AlcoBlow Rapid Test requires the smallest breath sample and ensures accurate results first time, every time. Results are obtained within seconds. Very economical operation, **no disposable mouthpieces are required**. The subject simply blows into a cone at the end of the instrument.



LION ALCOLMETER® 600

The Lion Alcolmeter® 600 and its printer have a **touch screen display**, for entering names, surnames and ID number of test subjects for printing and record keeping.



Drug testing as easy as A,B,C.....

3 step saliva and urine testing capable of testing people at site entrance/exit points and portable instruments with digital readouts for use at remote sites providing immediate printed evidence.

What are drugged employees costing your company?



DDS® 2 MOBILE ANALYSER

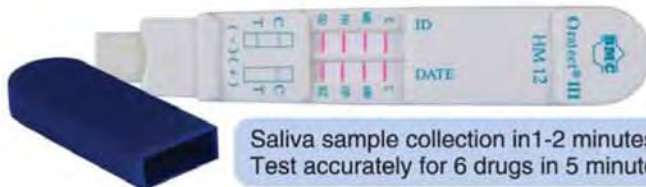
From a saliva sample it can tests up to 6 drugs within 5 minutes. Gives digital readout and multiple printouts. Zero chance for operator error

URINE TESTING

Test accurately for between 1-10 drugs in a matter of minutes. The test results are available within 5 minutes.



ORATECT®



Saliva sample collection in 1-2 minutes. Test accurately for 6 drugs in 5 minutes.

Help is one call away +27 12 343 8114 / email info@alcosafe.co.za or visit www.alcosafe.co.za for more information



Recognising intoxicated employees at the workplace and understanding its negative effects



National Safety spoke to Rhys Evans Director of ALCO-Safe. Rhys is an expert in the problems associated with alcohol and drug abuse at the workplace. He has written many articles on the subject and given several presentations.

According to the OHS Act, alcohol consumption is not allowed during working hours at the workplace. However this is not always easy to enforce, nor is it easy to determine who has come to work intoxicated. In this interview we explore how to identify inebriated workers and how to combat the problem.

NS: *Do you think that companies understand the real dangers that intoxicated workers can cause?*

RE: A lot of literature has been written on this subject, and a lot of publicity given to it, and therefore many organisations are aware of the dangers. However, they may think that they have put adequate controls in place to discourage it and therefore have control of the situation, whereas in fact they don't. Many companies discard minor

accidents as part of the job, but what they don't realise is that often these accidents may be caused by intoxicated employees. And according to the OHS Act, the company takes full liability for any accident on the job.

The only way to fight it successfully is by implementing a policy of no consumption of alcohol and drugs at all times at the workplace, and making sure that employees have no alcohol or drugs in their system while at work. This can only be accomplished through daily drug and alcohol testing.

NS: *Is there any time when alcohol can be consumed at the workplace, such as office functions?*

RE: The problem of alcohol being consumed at the Friday afternoon



braai, Christmas party or other function needs to be considered. In terms of the OHS act, no alcohol may be consumed in the workplace and no person should be in possession of alcohol.

Although it is no longer the responsibility of the company if an employee drives home inebriated and causes an accident, the injuries, or loss of lives should weigh heavily on the responsibility of management which were indirectly caused by the office function.

NS: *According to the Road Traffic Act, people can drive with a very low level of alcohol, so in reality they can leave an office function having consumed alcohol, as long as they are below the limit. Why is this different to what is allowed in the workplace?*

RE: Whilst the Road Traffic Act allows driving with a very low limit of alcohol in the blood, this should not apply in the workplace. If the employee is even slightly under the limit of 0,050% BAC, and causes an accident at work, this could be a problem for the company. Besides the legal implications, there could be an enormous financial loss if operations have to be shut down while investigations are under way.

NS: *How can intoxicated employees be identified?*

RE: This is an issue that must be examined, as it is a very important part of keeping a workplace free of alcohol and drugs. Employees who come to work drunk are easily identifiable, and according to legislation can be dismissed. But, then there are the functioning alcoholics who are more difficult to identify because they have developed a tolerance to alcohol. They may already have had a drink in the





morning before coming to work, and have learned how to mask the smell by splashing on after-shave and eating mints.

The problem is that although they appear to be normal, the alcohol in their bodies diminishes their instincts, putting themselves and fellow employees at risk which could negatively affect the company.

NS: Is there any way you can identify these functioning alcoholics?

RE: Employers must learn how to identify certain behaviour patterns. This could be recognised through changes in behaviour such as a decrease in work performance; absenteeism; constant headaches; emotional mood swings or even aggression.

There are also visible signs such as smell, red eyes, shaky movements and an inability to concentrate.

NS: What is the best way employers can combat the potential disasters of drug and alcohol abuse?

RE: Implementing an education programme is the first step. But, in reality the only way to make sure that your workforce is 100% alcohol free is through testing. An alcohol-free workplace will be more productive and run more efficiently and, we cannot overlook the positive contributions that will be made to society.

Testing is especially important for big companies, where it is difficult to know your employees and observe their behaviour. In smaller companies,

knowing your employees' work patterns, getting to know their physical characteristics, and looking out for change is easier.

ALCO-Safe have installed testing equipment at many companies who have been convinced that regular testing is not necessary. But, within the first few days of starting the programme, they have realised that this is not a futile exercise by the amount of employees who tested positive. And, by not allowing people who have tested positive onto the workplace, there is always an immediate decrease in accidents.

I recently helped a company implement an alcohol testing policy. The company director was overwhelmed at the decrease in accidents. He told us that minor accidents were often regarded as insignificant, and therefore not taken seriously, but once the alcohol testing regime was implemented, even the minor accidents stopped.

For those few employees who are alcoholics they may need to be sent to rehabilitation - medical aids generally do pay for this. It is unfair to fire people because they have been found drinking, rather educate them and give them the opportunity to understand the negative effects of alcohol abuse. Fear of losing a job, can have an enormous effect on people by motivating them to stop



social drinking during the week.

NS: How will this contribute positively to social problems?

RE: People work for financial reasons, they need to support themselves and their families, if they know that they will be tested every day, and that they are at risk of losing their jobs, they often stop drinking during the week. This has been seen over and over again. Not only will this have a positive effect at the workplace, but it may also help improve their home lives. If they are happier at home, they will come to work happier and their workplace performance will improve. Dismissing these people will lead to higher unemployment rates, without money, and without any means to support their families. Employers should rather see this as an opportunity to help employees.

NS: Is testing equipment expensive?

RE: The expense of the testing equipment will soon be forgotten, as performance, and productivity improves. The positive effects of this will be felt immediately, with a decrease in accidents. The abuse of alcohol and drugs is a growing social phenomenon, and it has been proven over and over again that this growing scourge can be stopped at the workplace where a strict testing policy has been implemented.

Without a doubt, the benefit will soon outweigh the cost and the inconvenience.

Contact Rhys Evans:

Tel: + 27 (0) 12-343 8114

Email: alcosafe@icon.co.za

Website: www.alcoholtesting.co.za



Spending 3 years on assignment at DuPont Switzerland



Ajen giving a presentation at the Kevlar® 50th anniversary in Abu Dhabi

Ajen Maharaj recently returned from a 3-year assignment with DuPont in Switzerland, where he was European Business Leader for the Kevlar® Life Protection business.

National Safety caught up with him at the DuPont offices in Melrose Arch recently.

NS: *On a personal level, how does it feel to be back in SA and what did you learn from the experience?*

AM: It feels good to be back in South Africa, with my kids happy to be close to their grandparents.

We do miss some of the unique things in Geneva, such as the mountains, winter sports and the organised way of life.

Key learnings on a personal level relate to the importance of being open-minded, and having the support of the family when you decide to go abroad.

This experience has broadened our minds, and certainly made my children stronger.

NS: *What are the obstacles you had to overcome?*

AM: The big challenge was the language, cultural differences, and adapting the wardrobe for the weather.

Fortunately, DuPont provided huge support, which certainly helped.

On the business front, you are an unknown quantity in the European market, until you get into gear. Hence you almost feel, that you have to prove yourself again!

NS: *On a business level, what lessons can you bring back to SA?*

AM: In Europe, the scale of business is so much higher, and of course this comes with added pressure.

People are very intense and work long hours, and this fits in very well with our SA work style.

Key learnings for me related to adapting to a new culture, understanding how to get the best out of people, and listening.

I must say, being new in the European environment, I had no choice but to listen to people's perspective!

NS: *What changes have you observed in the PPE industry in South Africa?*

AM: The structure of the industry has changed, with many regional players coming to the fore.

We are also seeing PPE suppliers looking for their own source of

differentiation and uniqueness - everyone seeks to offer something different.

We are pleased to note greater emphasis on training and learning, such that a more informed conversation can take place with the SHE officer.

As was recently conveyed to us by a leading mining company, "We need suppliers to understand our issues, and speak the same technical language as us".

NS: *What are the key challenges you see in the safety industry today?*

AM: Although there are very good products and solutions in the market, we are concerned about the number of inferior products which are being sold in critical applications. SAPEMA has to continue to monitor this.

I am also concerned about the level of misinformation which exists in the safety industry today. Claims made by some PPE suppliers, are out of sync with material performance. We must promote peer reviews to discourage such behaviour.

NS: *How do you see the future of the safety industry in SA?*

AM: The industry is growing and new players from across the spectrum are entering the market.

International companies are continuing to invest and this bodes well for the future.

Our industry bodies are strong, well supported and committed to enhance the occupation health, and safety standards in South Africa.

Protecting our workers, ensuring that they return home safely to their families, remains a top priority for the industry.

Alcohol and access control

The trend in industry is currently towards a zero tolerance of alcohol and other drugs of abuse. Alcolizer has always been at the forefront in technology and the advancement of safer work practices.

Working closely with Runrite Electronics the master distributor for Africa, Alcolizer has developed the Centurion. With over 20 years experience with the Wall Mount Alcolizer, the need to combine accuracy and fast response time was integral to the design.

With thousands of self test units installed across Southern Africa and Australia the move into a fully integrated system was a natural evolution in the product offering.

The Alcolizer Centurion is a fixed mount breathalyser designed specifically around access control. There are several unique features in the design that set the Centurion apart.

- Fast passive - with 'anti-blowback' patented sample module.
- Access Control integration - multiple platforms, 3 x relay outputs, RS232 bi-directional communication and Ethernet.
- Ethernet connectivity with upload facility to the AlcoCloud management tools.
- Full internal data-logging and simple download via USB flashdisk

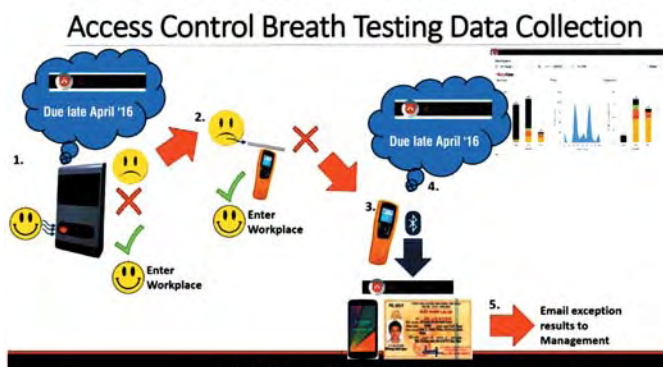
ANTI-BLOWBACK TECHNOLOGY

One of the biggest challenges facing large companies undertaking passive alcohol testing is the question of hygiene.

Most modern passive alcohol screeners have a 'blowback' effect where the subject blows directly onto the device and a residual amount of air is forced back onto the face and mouth of the test subject.

Using a patented diffusion system Alcolizer has prevented any blowback from occurring. This means that staff can rest assured that the unit will remain fit for purpose and safe for use at all times.

Due to the nature of the service and calibration of the device the entire sampling system is regularly replaced (every 6 months) to further ensure hygiene is maintained.



This also means that security personnel do not have to constantly worry about cleaning the device and potentially contaminating the sampling port with alcohol containing cleaning solvents. The Centurion has been medically assessed by independent medical professionals.

ACCESS CONTROL INTEGRATION

Already trials have been conducted on some of the most prominent access control platforms.

The ease of integration has been noted by several installers and programmers. 100% back-up from Runrite Electronics and Alcolizer Technology gives both end-user customers and integrator peace of mind that the alcohol tester is fully covered.

ZERO TOLERANCE

Here is an example of how the Centurion fits into the model for an effective Alcohol Control Policy using the full power of Alcolizer Technology.

Contact: info@runrite.co.za Tel: +27 (0) 87 806 5570
Website: www.runrite.co.za



Tel: +27 87 806 5570
Email: info@runrite.co.za
Web: www.runrite.co.za

Digital Test Equipment For A Safer Work Environment

FOOTWEAR THAT'S TOUGH TO BEAT.



MAXECO RANGE

FOR GENERAL ALL-ROUND
SAFETY



Zeus - NTC
Code: 8118



Maxeco - STC
Code: 8031



APOLLO SOLE

FOR MAXIMUM SLIP
RESISTANCE



Sport - STC
Code: 8050



Galaxy - STC
Code: 8095

Made in South Africa



www.lemaitre.co.za



PARABOLIC RANGE

WITH A CURVED SOLE FOR
EXTRA COMFORT



Quest - STC
Code: 8002



Explorer - STC
Code: 8004



Hunter - STC
Code: 8006



Odyssey - STC
Code: 8000



RAPTOR SOLE

WITH BUILT-IN SUPPORT FOR
TORSION CONTROL



Hercules - NTC
Code: 8048



Falcon - STC
Code: 8026



Hiker - STC
Code: 8039



Eagle - STC
Code: 8025



LEMAITRE

ARE YOU USING
COMPLIANT PRODUCTS FOR
YOUR **PPE REQUIREMENTS?**



SAFETY IS THE ONLY WAY!

SAPEMA is dedicated to promote the manufacture and distribution of quality items of **Personal Protective Equipment** complying with recognised Safety standards. We stand for Compliant Product, Correct Usage of PPE, Standards and Specifications.

For more information, contact SAPEMA on 063-442-9935 or info@sapema.org.



www.sapema.org

SAPEMA supports hearing-impaired school children

Eduplex is a unique school that is internationally recognised, in which pupils with hearing loss learn and acquire normal spoken language alongside their friends with normal hearing. Through this interaction, deaf children see themselves as part of normal society.

The facilities at the school are custom designed for the specific needs of deaf children.

There are currently 778 learners of which 75 are deaf. More than half of the deaf learners are from economically poor homes and dependent on bursaries. When Nelson Mandela opened the Eduplex Pre-School, in March 2002, he said, "What you are doing here is changing tragedy into triumph". This is indeed the heart of the Eduplex vision.

Clyde Beattie, Chairman of Sapema, was recently invited to visit the school where he was given the opportunity to see how the school operates. He was so impressed with the way in which deaf children are integrated into main stream schooling, that he realised this was a good cause for Sapema to support.

He knew that getting member support would not be difficult, due to many of the Sapema members selling hearing protection.

"Being able to function as a deaf or hearing impaired person in industry has huge challenges and, I found it refreshing and heart warming that Eduplex was doing this for school children from a young age.

"By integrating hearing impaired children with normal hearing children, they soon become fully integrated and learn to function in society in a valued and meaningful way", said Beattie.

Hearing protection is a major challenge in the workplace because many people are not always aware of the risks they face with over-exposure to high noise levels. More frightening is the fact that many of the workplace environments have not identified areas of high noise levels, and thus place their workforce at risk of noise induced hearing loss.

"With the incredible story behind Eduplex, their ongoing efforts to grow the school and offer children who have a hearing impairment an opportunity to be educated in a "normal" hearing school environment, makes further support from Sapema a real possibility" concluded Beattie.

The emphasis on spoken language ensures that all children reach a level of linguistic maturity that lays a firm foundation for literacy, numeracy and academic success, facilitating deaf children to be able to enter courses of higher education, opening more opportunities for job mobility.

The audiological support at the Eduplex is provided by audiologists from the Ear Institute nearby. They follow evidence-based practice in the evaluation of the child's hearing, the fitting of amplification devices and the verification of the fittings.

The establishment of EDUPLEX has been made possible by generous donations.



Morning assembly - children sing as Principal Jannie de Goede plays the guitar



School children accepting the cheque from SAPEMA Exco members



School children rejoicing after learning about the donation



André Eloff hands the cheque to Principal Jannie de Goede, as SAPEMA Chairman Clyde Beattie looks on



Clyde Beattie giving a presentation as Exco members listen.

(L to R) Johan Olivier, Deleane Luzzatto, Helena van Greunen, Neels Coetzee



Contact SAPEMA: Secretary: Helena van Greunen , Email: helena@sapema.org
Tel: 063 442 9935 / 071 602 1456 Website: www.sapema.org

Strengthening fire safety in Nigeria

As the Federal Government of Nigeria looks to rebrand the fire service for efficiency, experts have advised that it should strengthen its awareness campaign on fire safety mechanisms to prevent and reduce the incidents of fire outbreak in the country.

They emphasised that the incidents of fire emergencies in the country can be partly attributed to poor awareness levels on fire safety measures.

“The national attention given the service after it has been neglected for more than a decade is encouraging,” said the National Coordinator of Safety Advocacy and Empowerment Foundation, Nigeria, SAEF, Kadiri Shamusideen.

“But, he pleaded that the N4.6 billion intervention fund dedicated to improve the sector be utilised for visible results” pleaded Shamusideen.

The Minister of Interior, retired Lt-General Abdulrahman Danbazau recently said that the funds would be used to purchase fire-fighting equipment, improve on existing facilities, training, recruitment and welfare of the personnel.

The programme director of NFPAWA, Mrs Anthonia Beri, added that government should also facilitate the formation of voluntary fire fighters to complement the activities of career fire fighters who were still not delivering to required expectations.

“It will be more rewarding to set up a fire-fighter’s club, like it is in advanced countries, which should be a citizen volunteer organisation like the Red Cross, where able bodied men and women are encouraged to be members and are trained from time to time on the basics of fire safety and firefighting. This would go a long way towards enhancing the job of firefighting” said Beri.

“The existence of a voluntary rescue organisation would also assist in increasing fire safety awareness,” commented Shamusideen.

Shamsudeen emphasised that the forthcoming conference and training that was to be presented by NFPAWA on Fire Enterprise Risk Management was relevant in this wise.

Being held in May it will highlight the standards and requirement for attending to emergency situations, the importance of having a robust fire safety management in workplaces for business continuity as well as bringing into focus how organisation cans proactively prevent fire occurrences

NFPAWA (National Fire Prevention Awareness and Advocacy) is a life and risk risk management organisation set up in 2016 to bridge the gaps in hazards and fire risk response, mitigation and management and safety standards within Nigeria and the African continent.

MANUFACTURERS AND DISTRIBUTORS OF PERSONAL PROTECTIVE EQUIPMENT AND SAFETY WEAR

SAFECO



















CHECK OUT OUR FULL RANGE OF SAFETY PRODUCTS: WWW.SAFECOSAFETY.CO.ZA

18 Wattle Road, Newlands, Johannesburg, Gauteng, South Africa. T: 011 477 0190/2/3 F: 011 477 0420 E: safeco@icon.co.za

**THE TECHNICALLY-
SUPERIOR 3M™ VERSAFLO
POWERED AIR TURBO
TR-600. IN DUSTY
CONDITIONS, IT'S A
BREATH OF FRESH AIR.**



Now available from Pienaar Bros is the new Versaflo Powered Air Turbo TR-600 from 3M™. More than being technically superior to anything currently available, this market-leading aspirator blows air into the helmet, is more comfortable to wear than a face mask and provides workers with the necessary flexibility to move from one environment to another, and from one application to the next. Designed to be compatible with multiple configurations of headtops, breathing tubes, batteries and more, the Versaflo Powered Air Turbo TR-600 provides excellent peripheral and downward vision and ensures unmatched worker protection. It's lightweight, compact, well-balanced and addresses the need for comfort, cost and performance in all work environments. It's a winner any way you look at it, and yes, you should be interested. Our contact details are below.

+27 11 824 2384 | 43 Snapper Road Wadeville | sales@pienaarbros.co.za | www.pienaarbros.co.za

An approved distributor
of 3M products



3M Science.
Applied to Life.™

MAY 23 - 25 2017

MASLOW HOTEL
SANDTON, GAUTENG
SOUTH AFRICA

Don't Miss This
Important Industry
Event



GAS
AFRICA
2017

The growing importance of Gas in Africa has been emphasised in political circles, multiple publications and conferences such as previous Gas Africa events over the past 5 years. 2017 is no exception providing potential participants with rare insights and pertinent observations of the major players in an industry that has come under increasing pressure in times of uncertain prices.

With invited speakers from all over Africa and Southern Africa, Gas Africa 2017 will have one of the best line ups of speakers we've had, giving delegates and exhibitors an unrivaled opportunity of networking and getting new business.

Oil & Gas Logistics In addition, day 3, the 25th May, will concentrate on the problems and solutions to logistics within the Oil & Gas Industry. This very successful and interesting segment has previously only been held in Cape Town, but now offers an even broader segment of interested parties the opportunity of a significant and meaningful participation.

The **Gas Africa Exhibition** will be where supplier's opportunities come to the fore - a growing but very specifically aimed exhibition reaching the most influential people in the Gas industry in sub-Saharan Africa. A captive audience of delegates channeled through the well laid out Exhibition at least four times per day.

Contact the organisers NOW on +27 (0)11 8830802 to book your stand or your seat at the conference. Or go to our web page - www.gasafrika.co.za.

Email: events@ingadaevents.co.za

But do it before its too late!

Sponsors:



Standard Bank

Also trading as Stanbic Bank



INGADA
EVENTS

P O Box 3699, Rivonia, 2128, South Africa
Tel: +27 (0) 11 883 0802 Fax: +27 86 718 0052
Email: events@ingadaevents.co.za

In conjunction with
& supported by:



SAOGA
SOUTH AFRICAN
OIL & GAS ALLIANCE

AFRICA HOUSE

SAIPPA



Message from the President

Joep Joubert

A good day to all members of IOSM!

I trust this first message from my desk for 2017 finds you all in good health physically, mentally and in your work!

CHANGES TO STRATEGY

The National Council, during our planning for 2017 decided to make a few changes to our strategy. We decided to start playing more of a mentor and educator role, thus focusing on growing the expertise and professionalism of all involved in Occupational Health and Safety.

This strategy is now captured in our **Vision**:

The Professional Body for the Growth of Occupational Safety

and in our **Mission**:

To provide an opportunity for the support and development of all those involved in Occupational Safety

I would like to reiterate a number of issues that we have sent information on already:

- During last year a decision was taken to adapt our assessment process so that a person applying to become a Registered Occupational Safety Professional will no longer be required to write the examinations, but will only be invited to the professional interview, if he or she meets the criteria.
- You have also been informed of our new fee structure where we adapted our fees to the different levels and are also offering a discount incentive to people paying their annual fees within a month of issuing the receipt. Please refer to your invoice and statement for the details.
- Professionally registered individuals will in future also be allowed to display the IOSM logo, if of course they meet all the registration criteria which includes CPD, updated personal data for SAQA purposes and being in good standing. Logos will be issued individually to members that comply.
- We have improved the value for our corporate members as well, and we have started a process to implement it. This will include amongst others, the opportunity for preferential advertising fees on our website.

- The option to advertise on our website will also be available to non-members.
- You have been sent numerous letters about the Continued Professional Development (CPD) requirements and we have no choice but to start de-registering people who are still ignoring the requirements.

DOL REVISIONS TO REGULATIONS

The Department of Labour have warned of a number of revisions to Regulations that will be published for comment soon.

The **Ergonomics Regulations** were published already and really require careful scrutiny.

Others like the **Asbestos Regulations** and the **Major Hazard Installation Regulations** are expected to follow soon. We will keep you informed as the process unfolds.

Members may also be aware of the fact that the Department of Labour, at their KZN Conference on 8 and 9 March discussed the **Guidelines to the Construction Regulations** which is now also very close to release. We shall inform you as soon as it is official.

A delegation of the IOSM was honoured to have an appointment with the Director General of the Dept. of Labour, Mr Thobile Lamati, during December. Besides the very cordial discussions, we also handed the DG his very long overdue Honorary Membership Certificate. See the photo showing the handing over of the certificate by Joep Joubert and Leighton Bennett to Mr Lamati.



A-OSH EXPO

The annual A-OHSExpo is almost on us again and the Institute of Safety Management will again have an exhibition stand, so please come and visit us. We will be involved in the seminar theatre, don't miss your chance to listen to some of the most well-known names in the OHS industry to talk about topics of special interest, all for free!! Speakers will include amongst others, the Chief Inspector of the Dept. of Labour Mr Tibor Szana, Dr Johan Schoeman, Dr Denis Cronson, Dale Kennedy and yours truly. Watch the IOSM space for more detail closer to the Expo!

See you all at A-OHSExpo 2017!!



Draft ergonomics regulations



At recent workshops held by the Department of Labour in various provinces, we were reminded that the Draft Ergonomics Regulations have been issued for comment, and that comments close on 27 April 2017. Attendees at the workshop were requested to channel their comments through their professional organisations using this form, which is also included with the draft regulations themselves. This will ensure that the comments are prescreened and collated before submission to the Department, thus speeding up the review and revision process.

IOSM members can submit their comments through the PRO, Richard Whittaker, via email at richard@rhesq.co.za ASAP to allow time for the collation.

The draft regulations can be viewed at <http://www.labourguide.co.za/workshop/1267-ohsgg40578r64of20171/file>

Draft Ergonomics Regulations

And the presentation here: <http://www.labour.gov.za/DOL/downloads/documents/useful-documents/occupational-health-and-safety/Ergonomics%20workshop%20%20presentation%20FEB%202016.pdf>

DoL Ergonomics presentation

Reproduced by Data Dynamics in terms of Government Printers' Copyright Authority No. 9585 dated 24 September 1993

24 No. 4057B

GOVERNMENT GAZETTE, 27 JANUARY 2017

Annexure A

Comments / inputs on the Draft Ergonomics Regulations as proposed by the Department of Labour.

Kindly provide inputs, corrections and/ or comments in writing on the proposed Draft Ergonomics Regulations in the following format:

Name and Surname:		E- mail	Phone number:
Company name (if applicable)			
Government	Industry	Union	Consultancy
Private	Other		

1	Regulation and/or sub regulation from the draft, referring to	Comment/ Input/ Correction/ Proposal Plus motivation
Will the proposed regulation have an impact on any other regulation? If so, which regulation and what will be the impact?		
2	Regulation and/or sub regulation from the draft, referring to	Comment/ Input/ Correction/ Proposal Plus motivation
Will the proposed regulation have an impact on any other regulation? If so, which regulation and what will be the impact?		
3	Regulation and/or sub regulation from the draft, referring to	Comment/ Input/ Correction/ Proposal Plus motivation
Will the proposed regulation have an impact on any other regulation? If so, which regulation and what will be the impact?		
General comments:		

Signature: _____
Date: _____

Provide inputs to Department of Labour by e-mailing this completed document to clement.lekgetho@labour.gov.za; warren.mallon@labour.gov.za and buletwa.huna@labour.gov.za or by faxing it to 012 309 4763



Workshop discusses the Occupational Certificate:

Occupational Health and Safety Practitioner

Feedback on the Workshop Hosted by HWSETA to discuss the Occupational Certificate: Occupational Health and Safety Practitioner

The HWSETA hosted a workshop on 8 and 9 March at the Aviator Hotel in Kempton Park, to discuss the new Occupational Certificate: Occupational Health and Safety Practitioner, in order to get HWSETA service providers to understand the content of the qualification, as well as to identify potential shortcomings in the qualification that might need addressing in some way.

Approximately 60 HWSETA service providers from across the country attended.

As can be imagined the session was characterised by some robust debate.

SHORTCOMINGS OF THE QUALIFICATION

A number of issues were identified by delegates which they perceived as shortcomings of the qualification.

In summary the shortcomings hinged around the fact that the qualification does not contain specific elements of the right size, which could be used to provide training on certain legal compliance issues like, first aid training, fire training, health and safety representative training, risk assessment training, etc.

CLARIFICATION THAT WAS PROVIDED

The following clarification was provided:

1. Until such time as the unit standard qualification teach out period is reached, there will be a dual system based on unit standard qualifications on the one hand, and the QCTO qualification on the other hand.

For OHS, the quality control of unit standard training will remain with the HWSETA, whereas the quality control for the QCTO qualification will rest with the appointed assessment quality partner (AQP), which is DQS.

2. The ETQA function of the SETAs has been extended till March 2020.
3. The Occupational Certificate: Occupational Health and Safety Practitioner, will be registered as soon as possible, with minor changes from the version circulated for comment in September.
4. The Occupational Certificate: Occupational Health and Safety Practitioner, is designed for the training of Health and Safety Practitioners, not general health and safety training of the workforce.

5. The Health and Safety practitioner cannot be the Emergency controller as well as the fire fighter and the first aider, hence the qualification did not focus on providing him/her with firefighting and first aid skills.
6. The curriculum for fire training must be sourced from the Fire Prevention Assistant as part of the Occupational Certificate: Fire fighter.
7. The curriculum for the first aid training will in time, be sourced from a new Occupational Certificate for First Aid/Basic first responders currently being developed. The name is not yet confirmed.
8. For other perceived OHS legal compliance training, i.e. aspects like HIRA, incident investigation, etc., the curriculum can be drawn from the Occupational Certificate: Occupational Health and Safety Practitioner.
9. More specialised aspects e.g. transportation of hazardous goods training will have to be sourced from newly developed qualifications in the field where it belongs, in this case transport.

Although a number of other aspects were discussed, in the opinion of the writer, the issues highlighted above, are the most critical.

All QCTO Qualifications for public comment, qualifications recommended for registration and registered qualifications can be found on the QCTO website, at <http://www.qcto.org.za>, under Development of Occupational Qualifications.

Should there be any further questions in this regard, please feel free to contact Joep Joubert directly at joep@advantageact.co.za.



ARE YOU MEETING ALL OCCUPATIONAL AND ENVIRONMENTAL CHALLENGES?

Occutech is an inspection authority for the work and business environment surrounds approved by the Department of Labour

- Indoor air quality assessment
- Risk assessors
- Occupational hygiene
- Environmental consultants

"PREVENTION IS BETTER THAN CURE!"

Occutech is able to recognise, evaluate and recommend cost-effective controls of occupational and environmental hazards

<http://www.occutech.co.za>
Email: occutech@occutech.co.za
Tel: (031) 206-1244 Fax: (031) 205-2561





S.P. van Rensburg. (ROSPrac)

Pesticides in agriculture



ORGANOPHOSPHATE PESTICIDES

In health, agriculture, and government, the word “organophosphates” refers to a group of insecticides. It is common knowledge that insecticides or pesticides are used in agriculture.

But, how safe are organophosphate pesticides to humans? And, is organophosphate poisoning possible? The answer to this is that yes, organophosphate pesticides can be absorbed by inhalation, ingestion, and dermal absorption.



headaches, speech difficulties, delayed reaction times, nightmares, sleepwalking, drowsiness, or insomnia. An influenza-like condition with headache, nausea, weakness, loss of appetite, and malaise has also been reported.



ORGANOPHOSPHATE POISONING

Organophosphates have a neurotoxic effect on the brain by affecting neurotransmitters such as acetylcholine which is important in brain development.

HEALTH EFFECTS

Chronic exposure

Repeated or prolonged exposure to organophosphates may result in the same effects as acute exposure.

Effects reported in workers repeatedly exposed include impaired memory and concentration, disorientation, severe depressions, irritability, confusion,

effects has been conducted on farmers working with pesticides and insecticides in rural areas.

Poor semen and sperm quality have been seen on males exposed to organophosphate pesticides, including reduced seminal volume, as well as a decrease in sperm count per ejaculate.

In females, menstrual cycle disturbances, longer pregnancies, spontaneous abortions, still-births, and some developmental problems in offspring have been linked to organophosphate pesticide exposure.

Prenatal exposure has been linked to impaired fetal growth and development.

The effects of organophosphate exposure on infants and children are at this time currently being researched to come to a conclusive finding.

Low level exposure

Even low levels of exposure can affect the brain and may be hazardous to fetuses and young children, where brain development depends on a strict sequence of biological events.

Organophosphates can be absorbed through the lungs or skin or by eating when they are found on food.

According to a 2008 report from the U.S. Department of Agriculture, detectable traces of organophosphate were found in a representative sample of produce tested by the agency, 28% of frozen blueberries, 20% of celery, 27% of green beans, 17% of peaches, 8% of broccoli, and 25% of strawberries.

REPRODUCTIVE EFFECTS

Certain reproductive effects in fertility, growth, and development for males and females have been linked specifically to organophosphate pesticide exposure.

Most of the research on reproductive

SAFETY OF FARMWORKERS

To ensure the safety of farmworkers, the following must be considered:

- If possible avoid the use of organophosphate pesticides.
- Ensure that the workers receive proper hazardous chemical substances training.
- Ensure that the correct personal protective equipment is issued to every worker and that it is properly used.
- Do not allow pregnant woman to work with organophosphate pesticides.

ENGINEERED TO PERFORM

YOU WORK HARD. THEY DO TOO.



NEPTUN MANUFACTURES WORLD-CLASS QUALITY SAFETY FOOTWEAR

for the mining, agricultural, food processing, security and general industries. Through innovation and advanced technology all our boots are engineered to be hardworking, in comfort, support and protection.

MINING



shsholoza
sjimejaXP
sfrident

GENERAL PURPOSE



SafeLite
SHOVA
Marina
Clipper

FORESTRY



sjimejaXP
shsholoza
sfrident

SECURITY/ SAFETY



sfrident
SafeLite
SecureLite

AGRICULTURE



shsholoza
SHOVA
Marina

FOOD PROCESSING



shsholoza
SHOVA
Marina



SETTING A NEW STANDARD
IN SAFETY FOOTWEAR



www.neptunboot.co.za



[Instagram.com/neptunboot](https://www.instagram.com/neptunboot)



[@neptunboot](https://twitter.com/neptunboot)



[facebook.com/neptunbootsouthafrica](https://www.facebook.com/neptunbootsouthafrica)



by Rob van Hemert

Rob van Hemert is well known to readers of National Safety for his wide ranging articles covering safety and risk. During his career, he had many very personal close encounters with life threatening situations.

I was fortunate in 1965 having secured the position of bitumen unit operator at the Shell oil refinery in Durban. That was a nice job. It was a manageable process and basically you ran this whole unit, control room panel and all. I really enjoyed my days there. There was also opportunity to practice optimisation, as there were many variables in making what is known as blown bitumen, and you had free reign to change things and check the results an hour later.

Blown bitumen is basically a very hard bitumen that is made from soft bitumen subjected to an oxidation process, with some materials added.

Flirting with danger

The bitumen blowing column was a very delicate piece of process equipment, because you fed very hot bitumen into it, and added air making the stuff burn, as it were. If you added too much, though, the pressure rose and the entire top would open up. This was a hatch that was held in place with a metal pin that broke under a certain pressure. The vapours coming off this column were the bitch of this unit. A scrubber had been added to remove the liquid fraction from these vapours and this scrubber would plug and also create an increased pressure with similar results.

This one particular morning shift it was raining like mad, so I had on a plastic heavy duty rain suit. I was busy trying to get the scrubber clear, that my predecessor had somewhat neglected. Suddenly, "POOOFFF" and the sky turned black, with bitumen raining down all around and over me. Where it fell on the ground it transformed the rain water into steam and this was a fascinating thing to watch. I simply retracted myself like a tortoise into my suit and under my hardhat. Luckily it was raining otherwise I would have

been badly burnt by this 300°C stuff. My angel!!

Dr Gerry Rose was the refinery manager at the time. The bitumen unit happens to be the closest process to his office and he overlooked it (more or less). He was a pedantic type, always wearing white gloves, and he was now running out of the office building towards me pulling on white gloves. I remember being greatly amused by this. There I stood, frozen like Lot, watching the steam bubbles rising from the concrete where the bitumen hit it. Streaks of bitumen were running down my hat and solidifying like icicles hanging from a power line - long icicles.

"What happened?" Dr Rose demanded.

"The blowing column blew its top!" I told him.

"Oh, OK" and he ran off out of the rain. No, "Are you OK?" or anything. Wasn't concerned about the welfare of his employees, only his plant. He didn't rate high in my opinion after that (or before, come to think of it).



Type 5/6 Certified Liquid Splash and Infective Agents Resistant Coverall



Great penetration resistance against chemical liquid, blood, body-fluid and infective agents.

Low linting!

Suitable for cleanroom.

Application. Epidemic prevention/ biological hazards, clean room, asbestos handling, agriculture, automotive, chemical handling, electronics, paint spray, pharmaceutical.



Email: info@isscc.co.za / www.vanguardfire.co.za
Tel: +27 31 564-3200 / Tel: +27 41 451-2461



ULTITEC 2000 provides great protection against chemical liquid spray, while remaining breathable and comfortable wearing experience, ideal for wide range of industrial applications.



ENGINEERED WITH PURPOSE



PARTNER WITH PROFESSIONALS

Bova safety footwear is engineered to perform with specific purpose. We explore the varied dangers inherent in an industry and then we engineer the solution.

The 4 **BOVA CATEGORY RANGES** enable you to correctly select protection for a range of personnel, from on-site business execs, warehouse staff, smelter workers and miners deep underground, to construction or farm workers. Specialised, patented technologies ensure specific safety for various industries. In this way, safety is never compromised and spend is expertly utilised.

You have the terrain; we have the exact footwear engineered to overcome it.

LIGHTWEAR | HEAVYWEAR | EXTREMEWEAR | PARAMILITARY

Lockout and tagout made simple



- able to clearly identify the employee who installed the device,
- standardised in the facility by shape, colour and/or size,
- unique from other locking devices,
- used exclusively for lockout and tagout purposes.

MACHINERY REQUIREMENTS

Every piece of machinery must have its own procedure to ensure adequate lockout of its energy sources.

This could be as simple as locking out a circuit breaker or a valve in the closed position, to multiple lockouts of different energy sources to the machinery.

Using Master Lock accessories, ensures convenient, simple and adequate lockout of all sources of energy.

No matter what the source of energy, there is a Master Lock solution.

ADVICE AND TRAINING

In addition, Master Lock South Africa offers a free advisory service, where a qualified consultant will do a site inspection and advise management on which safety devices and padlocks are best suited for the facility. This free service ensures the correct choice of padlocks and accessories necessary on site.

Master Lock also provides training to employees who need to use padlocks and accessories.

Management of a facility can then rest assured that the correct safety padlocks and accessories are being used as intended, thereby ensuring safety of personnel and reducing down time.

Master Lock is the only company that backs all their safety products and accessories with a limited lifetime guarantee.

Contact IB McIntyre & Co. Tel 021-511-6104

Every organisation's most important asset is its employees. These are not only the most costly component of the organisation, but also the most important. Laws stipulate that every employee must be protected during maintenance and shut-down of machinery. Lockout and Tagout applications are paramount during maintenance and shut-down procedures, however, this can be a daunting task to an organisation, as the incorrect choice of lockout and tagout padlocks and accessories will compromise the safety of workers during maintenance.

OSHA LOCKOUT, TAGOUT GUIDELINES

The Occupational Health and Safety Act (OSHA) has guidelines and standards which must be strictly adhered to. Failure to adhere to them could lead to financial or punitive sanctions by the relevant authorities.

Necessary equipment required can be classified as:

- 1) Safety padlocks
- 2) Safety lockout accessories
- 3) Safety identification tags and signs.

It is important to note that not all safety lockout and tagout equipment was created equal, and as with everything in the market place, there are good quality and lesser quality products available.

Master Lock is the world leader in safety padlocks as well as safety accessories used in all lockout and

tagout applications.

The use of Zenex thermoplastic in safety padlocks ensures the durability of the padlock, and also ensures that a non-hazardous lock is used in potentially explosive or corrosive environments.

DIFFERENT LOCKS AVAILABLE

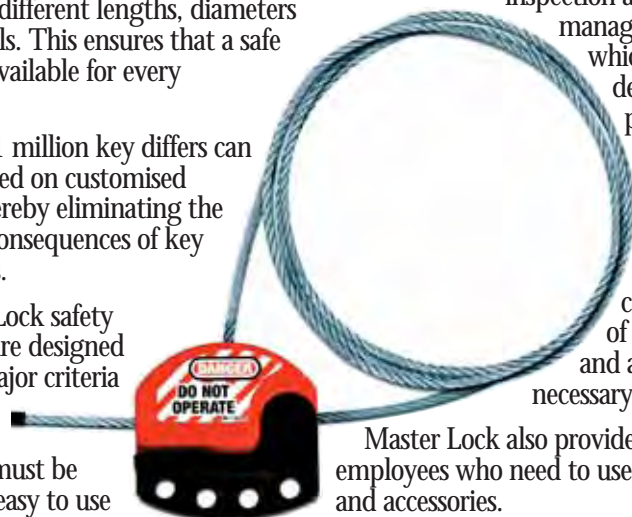
Lock bodies are available in various colours and sizes and shackles are also available in different lengths, diameters and materials. This ensures that a safe solution is available for every application.

More than 1 million key differs can be guaranteed on customised systems, thereby eliminating the hazardous consequences of key duplications.

All Master Lock safety accessories are designed with two major criteria in mind, firstly, all accessories must be simple and easy to use and secondly, all accessories must comply with the OSHA standards.

OSHA requires that all lockout and tagout padlocks and accessories must be:

- manufactured from durable materials which can withstand the environment in which they are being used,
- substantial enough to withstand removal without use of excessive force,



HASLAC

To our beloved old logo:
You have been good to us, but its **Time** to let you go...
Time to Go Global and **Time** to let go of "TIMES NEW ROMAN"



HASLAC

We are **20** YEARS celebrating
of successful business

Two decades ago, Louis Taljaard - a legend in the industry - had the vision to start a specialist consulting company that would help clients meet their needs in SHERQ management by focusing on occupational health and safety legislation compliance.

Now 20 years later, although sadly Louis passed away, his vision lives on. To celebrate its 20th birthday, HASLAC has modernised its image, and introduced new and exciting training courses, to be seen for the first time in South Africa.





First of its kind in SA

4 HOUR ENVIRONMENTAL LAW

This course is designed to enhance compliance, awareness and promote responsibility towards environmental conservation.

1 DAY HEALTH & SAFETY LEADERSHIP TRAINING

This course is designed to up-skill and creates awareness around Management & Supervisory responsibilities in consideration of personnel and applicable activities.

4 HOUR EXCAVATION TRENCHING & SHORING

This course promotes awareness and responsibility of personnel involved with Excavation, Trenching, and Shoring.

4 HOUR FLAGMAN / SIGNAL PERSON

This course promotes awareness and responsibility of personnel involved with the functions and responsibilities of a Flagman / Signal Person.

4 HOUR PASSIVE FIRE PROTECTION

This course provides an overview of passive fire protection systems, including the elements and applicable standards.

4 HOUR ACTIVE FIRE PROTECTION

This is a Rapid Content Delivery course that provides an overview of Active Fire Protection (AFP) systems.

4 HOUR CONSTRUCTION LEGAL LIABILITY

This course is designed to enhance oversight awareness and promote responsibility towards legal compliance.

4 HOUR NOISE ATTENUATION

This course is designed to enhance oversight awareness and promote responsibility in consideration of personnel exposure to activities which may cause overexposure to noise.

4 HOUR MOTORISED HEAVY EQUIPMENT

This course is designed to enhance oversight awareness and promote responsibility for the safe operation of motorized heavy equipment.

3 HOUR PRE-TASK PLANNING & RISK ANALYSIS

This course is designed to enhance oversight awareness and promote responsibility in consideration of personnel and work activities associated with Pre-Task Planning / Risk Analysis.

5 DAY SACPCMP PROJECT / CONSTRUCTION HEALTH & SAFETY: BRIDGING COURSE

Upon successful completion of the course You will earn at least 2 scoring points towards your SACPCMP registration and assistance in your registration process with supporting documents.

A solid foundation, geared for a bright future HASLAC was established in March 1997 as Health and Safety Legal Audit Consultants Holdings (Pty) Ltd., trading as HASLAC.

HASLAC is specialist consultant in the integrated SHERQ Management field, with an emphasis on occupational health and safety legislation.

The company's employees have vast experience in the legislation and risk management.

The company has completed more than 1080 successful projects and is a fully accredited training service provider.

HASLAC's success can be attributed to their business philosophy, which rests on two pillars i.e.

- HASLAC is results-driven, and
- HASLAC's philosophy is related to the success of their clients.

Mission

Establishing and meeting the client's needs in SHERQ Management.

Accreditation

HASLAC is a fully accredited training service provider registered with the HW SETA.

Consultancy and training

HASLAC is a leading consultancy and training facility offering an extensive range of products and services which are complimented by the team's collective experience and knowledge of the field.

Client's are offered expert advice, expertise and interpretation in the following areas:

- Accident and incident investigation systems
- The Occupational Health and Safety Act, (Act 85/1993) and the Compensation for Occupational Injuries and Diseases Act, (Act 130/1993)
- Environmental Legislation
- I - SHERQ Risk Management
- SHERQ related arbitration
- Risk Assessment
- Hazard Identification Risk Assessment
- Task Specific Risk Assessment

HASLAC sees each client as unique entity, thereby offering tailor made products and services to suit the client's specific needs.

These include:

- I-SHERQ - LCA 5* Grading and Audits
- In-house or decentralised learning and skills programmes/seminars
- Training and career path development for SHERQ practitioners
- Facilitation of learning courses/seminars possible in all 11 official languages
- Contract binding: Section 37(2)
- I-SHERQ practitioner service: Full or part-time
- Dept. of Labour registered First Aid Training (Service Provider C1481): Levels 1-3
- I - SHERQ Management System: Planning and implementation
- I - SHERQ Management System includes: Occupational Health and Safety Act and its regulations; ISO 9001; ISO 14001; OHSAS 18001 and Environmental Legislation
- IT support and helpdesk: I-SHERQ Management System
- IT support: I-SHERQ 5* Grading System
- Assessor and moderation services (registered: ETQA-HWSETA)
- Star grading
- Distribution of SHE products, documentation and information.

Training

To stay compliant with the OHS Act, companies need to keep their staff trained at all times - **HASLAC** runs courses that are compliant with the OHS Act and is therefore the perfect training facility to fill this need. Companies must understand that not only basic training, but also continuous training is essential to ensure a safe and healthy working environment.

HASLAC approaches training from not only a legal point of view, but also to ensure that both the employer and employees are morally committed. "Training courses must be adapted to each of our client's needs and we ensure that these needs are met, therefore, our courses vary in length and are adapted to our client's individual needs" says Petro Taljaard, MD of **HASLAC**.

HASLAC's well-equipped training facility in Glen Austin, offers students an excellent learning experience. Malembe Lodge, situated on the property offers comfortable and modern accommodation to 12 students at a time.

Courses

"Our emphasis is to make the client's needs our priority. The correct training will be given to the correct persons thus saving the company from paying for "off the shelf" courses which cover aspects that are a waste of time and not applicable to that company," explains Taljaard.

The length of **HASLAC's** courses vary from a few hours to three weeks, depending on the needs of their clients. Various courses may be coupled together if there is a need for a more intense course covering a wider aspect of the Act.

"If you require any further details or assistance, please do not hesitate to contact us. We look forward to establishing a SHE partnership with your company, and we assure you of a quality service at all times" concludes Taljaard.

Team

The key to **HASLAC's** success is its collective pool of knowledge, experience and a passion for the industry. **HASLAC** employs some of the best SHERQ Management consultants in South Africa which is complemented by a dedicated management team. .

Contact:

HASLAC Training Academy, 455/3 Alsatian Road, Glen Austin Ext 3, Midrand
Tel: +27 (0) 11 312 0828 / 9
Jaco Steyn: Marketing Manager
Cell: 082 4182263
Email: jaco@haslac.co.za
Petro Taljaard: Managing Director
Cell: 082 789 9650
E-mail: ptaljaard@haslac.co.za

www.haslac.co.za





Dr Claire Deacon PhD (Constr Mgt) is the Managing Member of OCCUMED cc and has practised as an Occupational Health Practitioner (OHNP) since 1982. Claire obtained her PhD (Construction Management) at NMMU in 2016. She is registered as one of the few female Professional Construction Health and Safety Agents practising in the field. Claire is currently one of 2 construction H&S (CHS) council members appointed to the SACPCMP for the 4th term council. She is a member of SA Society of Occupational Health Nurses (SASOHN), the Chartered Institute of Building (CIOB); the Institute of Safety and Health (IOSH) in the UK, and the Ergonomics Society of South Africa (ESSA).

Pulmonary tuberculosis (PTB) is a communicable disease caused by bacteria called the Mycobacterium tuberculosis.

HOW PTB IS SPREAD

Spread is known as 'droplet infection' through coughing, sneezing and spitting. If untreated, an infected person can spread PTB to up to 10-15 persons annually. PTB is latent or does not show any symptoms among approximately one in every ten people, but some develop active PTB within about 2 years of having been in contact with a person who is sick, and untreated.

People who are more susceptible to developing PTB are those who are HIV positive, on immune suppressive medication, or are ill with other diseases, and have a poor immune system (South African Labour Guide (SALG), 2017).

ISSUES INCREASING TRANSMISSION

There are a range of issues that affect PTB transmission. Migrant workers, areas where there is poor ventilation, crowded living areas, hostels, prisons and a range of workplaces (SALG, 2017) help spread infection.

PTB can be recognised in the workplace, where there is a focus on primary health care, but this is often not the focus within the construction sector. Clearly, the earlier the diagnosis is made, the quicker treatment can be

Tuberculosis and the construction sector

started, and the spread of infection limited. Deacon, Lapere, Smallwood and von der Marwitz (2004) indicated that PTB is a major cause of death as a result of poverty, but also for those working in the mining sector.

DIAGNOSIS OF PTB

Medical surveillance is a requirement in terms of the Construction Regulations, for all workers in the sector (Republic of South Africa (RSA), 2014).

A full medical examination of a worker which includes a full history and clinical examination is likely to identify potential symptoms.

Where history or symptoms are identified, the worker will be referred for further investigation. PTB is a communicable disease and treatment is free through the state health system. Clinics make the diagnosis through 2 sputum tests, and ongoing tests until they are clear. Chest XRays are not taken to diagnose, but rather to observe the physical effect of the illness on the lungs.

Recent findings from the mining sector indicated that doctors fail to recognise up to 44% of PTB, incorrect diagnosis of 29% as the cause of death, and correctly identifying PTB on 27% on autopsy. What this means is that many people die early, and unnecessarily. This further results in the spread of PTB to those around them, thus increasing the opportunity of further unnecessary illness and early death (National Institute of Occupational Health (NIOH), 2017).

Deacon et al; (2004) conducted a medical surveillance study among construction workers, to determine the potential issues and history experienced by such workers. It was identified that 1.4% had been previously treated for PTB while previously working on the mines. While none of the respondents were on any treatment, a total of 8% had been coughing for more than 2 weeks, requiring further investigation.

SYMPTOMS OF PTB

- Coughing for more than 2 weeks, and mucous that could be blood stained;
- Chest pain;

- Loss of appetite, extreme tiredness, and
- Night fever and extreme night sweating.

TREATMENT OF PTB

Treatment protocols are complicated, and require a range of tablets to be taken daily according to the type of TB diagnosed.

Treatment is generally for 4-6 months, however, it may be longer, and more complicated. Supervisors at work can use the directly observed treatment (DOT), which means the worker is observed taking the medication at work. The DOT method increases compliance with treatment protocols, as this is a definite problem with such a long treatment period.

CONCLUSION

PTB is a disease that can affect the ability to work, have an increased likelihood of being contracted along with exposure to silica, as well as other diseases that reduce an individual's immune system. Early treatment limits the spread of the disease, and compliance to treatment. Medical surveillance programmes at work can assist with the identification of symptoms and referral for further investigations.

REFERENCES

- Deacon, CH, Lapere, J, Smallwood, JJ, & von der Marwitz, J. 2004. *The Health Status of Construction Workers*. Unpublished Magister Curationis Thesis, University of Port Elizabeth.
- National Institute of Occupational Health (NIOH). 2017. *Process-Based Performance Review for the Diagnosis of Pulmonary Tuberculosis*. TB Tool. http://www.nioh.ac.za/?page=tb_tool&id=118.
- Republic of South Africa. 2014. *Construction Regulations*. Government Printer, Pretoria.
- The South African Labour Guide. 2017. *What employers should know about Tuberculosis (TB)*. World Economic Forum Global Health Initiative. <http://www.labourguide.co.za/health-and-safety/1374-tb-what-employers-should-know>.



ACHASM
Email: info@achasm.co.za
Cell: 076 263 0549

Gas Detection

Microtector II G450 4-gas Detector



- Extremely loud alarm, 103 dB(A) for optimal personal protection
- Innovative visual alarm system, colour change of display
- Robust watertight housing for permanent use
- 4-Gas Detector
- Longlife sensors
- Intuitive handling
- Display can be turned 180° by just pushing a button
- 3 alarm thresholds for combustible gases and oxygen and 2 for toxic gases
- Power supply is provided by either a rechargeable NiMH battery pack or Alkaline batteries
- Optional loop data logger records gas concentrations and alarms during a period of 30 hours

Microtector II G460

Multi-Sensor Atmospheric Monitor

- Exceptional HAZMAT and Confined Space performance
- Up to 7 channels for detection, incl. PID Sensor (0.1 ppm) for direct reading of toxic VOC's
- Highly configurable smart sensor design
- Full featured, rugged design
- Highly water resistant (IP67)
- Top-mounted, back-lit, three colour graphic display
- Bright, flashing 360 LED alarms and loud 103 dB(A) buzzer
- Optional built-in Ex-proved torch
- Optional motorized pump operates in diffusion or sample draw mode



G400 Docking Station for G450 / G460 series

- Easiest calibration and charging
- Fast and fully automatic calibration and bump test
- Timesaving by using gas mixtures for calibration
- NO PC necessary
- Reduced maintenance costs



7 Voortrekker Road, Mindalore North, Krugersdorp
PO Box 6004, Westgate, 1734, South Africa
Tel: +27 11 955 4862
Fax: +27 11 955 4741
E-mail: gfgsa@icon.co.za
Website: www.gfg.biz



A-OSH EXPO SOUTH AFRICA 2017 - HALL 3, STAND AA14

Gas safety and compliance summit

Professor Mervyn King, NERSA and SAGA reiterate commitment to safe handling of piped gas

Compliance across all industry sectors can be seen as a vital preventative measure for safety as well as a tool in reducing mismanagement, collusion and corruption. The piped gas industry is no different.

The demand for gas as an energy is showing unprecedented growth. Compliance thus becomes paramount and will ensure that standards are maintained as new infrastructure projects are completed within Southern Africa.

SAFETY IS NON-NEGOTIABLE

At the recently hosted SAGA (Southern Africa Gas Association) Gas Safety and Compliance Summit - guest speakers Professor Mervyn King and Vusimuzi Zwane from NERSA reiterated SAGA's longstanding policy on safety and compliance.

King's presentation drove through the overarching global movement towards integrated reporting and social consciousness.



For the piped gas industry; handling of gas, gas installations and gas safety are no longer silos and now work hand in hand with company reputation and profitability.

Unlike the previous decade, only 20% of a company's value lies in its assets, the other 80% is attributed to future wealth, community reputation, digital footprint and innovation never forgetting safety. Being compliant pays!

NERSA's commitment to working closely with SAGA is encouraging and will ensure that safety remains as important in the gas industry as bottom-line and profitability.



PUBLISHED REVISION ON THE PRESSURE EQUIPMENT REGULATIONS (PER)

Key aspects were raised on the published revision of the PER. To assist with the Regulations, guidance notes were developed to assist industry with an improved understanding of the regulations and to reinforce regulation.

Some of the introduced guidelines could become regulations in a future

revision of the PER currently being worked on. Fundamental improvements have been made especially to Regulation 17 impacting the gas industry.

Further detail as to improvements will be communicated in due course.

For more information on SAGA visit www.saga.co.za



LPG - challenges and solutions

Global demand for Liquefied Petroleum Gas (LPG) is on the rise. However, South Africa has a national per capita consumption that is five times lower than the global average which simply means there is a void to be filled.

"The potential is evident, but today's leading oil and gas executives in Africa will need to stay on top of emerging challenges and opportunities to remain competitive." (PWR Report).

CHALLENGES FOR THE LPG INDUSTRY

The LPG industry is currently facing challenges and barriers that are yet to be resolved. Although the biggest investment in the industry comes from foreign investors, both foreign and domestic players face similar challenges. The misuse of industry regulations particularly with regards to import terminals and storage facilities is one of the biggest issues, minimal import terminals place a constraint for companies looking to import.

SOLUTIONS

However, solutions to these difficulties are under construction.

Talks about how many import terminals South Africa should have in order to ensure that LPG companies import easier and cheaper are in the air.

The National Safety Strategy is put in place with an objective to provide access to safe, cleaner, efficient, portable, environmentally friendly and affordable thermal fuel for all households, and to switch low-income households away from the use of coal, paraffin, and biomass to LPG.

This is bound to increase consumer appetite for LPG.

There is a perception among South Africans that LPG is somehow unsafe and this needs to be addressed through awareness and information drives.

"We need co-operation between all stakeholders and industry role-players in this regard," says Kevin Robertson.

VISION IN ENERGY EVENT

LPGSASA will collaborate in *The Vision in Energy (VIE) LPG Event* that is to be held on the 9th - 11th May 2017 at Monte Casino. It will arm regional players with knowledge, skills, and opportunities that are sure to create compact businesses within the industry. Participation and Intel from various stakeholders in the LPG value chain is a great method to encourage cooperate participation in the industry that few people seem to know about.

WORLD LPG ASSOCIATION

The World LPG Association (WLPGA) is one of the systems used to ensure the LPG industry is a prolific one, it serves as the authoritative voice of the global LPG industry representing the full LPG value chain. The primary goal of the Association is to add value to the sector by driving premium demand for LPG, while also promoting compliance to good business and safety practices. This association also looks to support and mentor women in the LPG industry, this is a brilliant initiative that focusses precisely on empowering women in this industry and ensuring their success.

During the course of the VIE event, categories that bring the most benefit and aids in the sustainability and growth of the LPG Industry will be presented with a total of eight Awards, four of which will be awarded at the GALA dinner that will be held on the evening of the 11th of May 2017, these are awarded to reward achievements and excellence in those areas that bring the most benefit in the LPG industry, ensuring its sustainable growth within the region.

The VIE Event is backed up by numerous exhibitors and sponsors; Cavagna Group, Mauria, Easigas, SCG, SAPI, Man-Tek, Amtrol-Alfa, FAS, Totali, Syam, LAPESA, SICA, Eyona Gas.

Find out more about LPGas www.lpgas.co.za/ / www.visioninenergy.co.za



Installation of evaporative cooling system



A two stage evaporative cooling system was chosen as the best solution for the new extension at Bridgestone factory in Brits.

Fifty-Two Engineering's MD, John Parry explains that this was possibly one of the safest sites and installations they have done.

"It's very unusual to have a clear, open factory to work in, where we were able to make use of an elevated platform for the ducting installation.

"We could have used a single stage evaporative cooler with Brit's high ambient conditions, however with the heat generated in the plant, a 2 stage system was decided upon," he explained.

"A 2 stage system drops the temperature of the air lower than conventional evaporative coolers, by pumping the cooled water from the sump through the cooling coil".

The advantage of an evaporative system is that 100% of fresh, filtered and humidified air is blown into the area it serves, thus making the working conditions excellent for the employees inside the factory.

An added advantage is that the air 'overflows' into the adjoining part of the factory.

Parry proudly mentioned "that being a member of SARACCA (South African Refrigeration and Air Conditioning Contractors Association) keeps 52 Engineering abreast of all the latest technology, up to date with contractual issues and most of all the help we receive from the training subsidy".

Being chairman of the Gauteng branch and now vice-president of SARACCA takes a lot of his time, but "if it helps with uplifting the skills in the industry, it will be worth it" he added.

In terms of maintenance of this system, servicing is very simple and only requires draining and cleaning the sumps, cleaning filters and ensuring the fans, pumps and controls are all in working order.





A-OSHEXPO
SOUTH AFRICA | 2017

30 MAY-01 JUNE 2017
GALLAGHER CONVENTION CENTRE, JHB

AFRICA'S LEADING OCCUPATIONAL SAFETY & HEALTH EXHIBITION

**WITH SAFETY,
PREVENTION
IS BETTER
THAN CURE!**



YOU WILL GAIN ACCESS TO:



**OVER
80 EXHIBITORS**



LIVE DEMONSTRATIONS

REGISTER ONLINE!



**NOSHEBO SEMINAR THEATRE
SPONSORED BY BBF SAFETY GROUP**



**OCCUPATIONAL HEALTH &
SAFETY CONFERENCE**

Official Media Partner:

SHEQ

Sponsors:



For more information, contact:
Leigh Miller, Marketing Manager
Tel: +27 010 003 3060
Email: leighm@specialised.com

www.aosh.co.za

Co-located with:

SECUREX
SOUTH AFRICA | 2017

Brought to you by:

SPECIALISED EXHIBITIONS
MONTGOMERY

A leader in OHS consulting and training

HISTORY

Advantage A.C.T. (Pty) Ltd was established in 2001 by Christel Fouché and was built into a well-known and reputable service provider in the South African and African Occupational Health, Safety and Environmental community. During January 2014 Advantage ACT was split into three different registered companies. Advantage ACT remains the largest, responsible for general Health and Safety training, AGO Certification (Pty) Ltd was established to provide certification and training services in the ISO 9001, 14001 and OHSAS 18001 domain. Steam Legal Compliance Solutions (Pty) Ltd provides OHS legal training, auditing and consulting services.

The companies were taken over by Pinnacle Occupational Safety and Health Services Holdings (Pty) Ltd in May 2016 and are managed by Joep Joubert, co-owner of the two groups.

CREDIBILITY

Advantage ACT believes that their competitive advantage is due to the extensive experience of their auditors, facilitators and implementers. To a large extent, the success of a SHEQ/HSEC programme depends on the change in behaviour brought about by good auditing, consulting and training interventions.

Advantage ACT has over the years maintained all the critical accreditations and registrations required by law and client requirements to prove its commitment to quality:

- Health and Welfare SETA Accreditation as training provider: HW592PA05000117.
- IRCA Registered under partnership with BSCIC: Lead Auditors Courses: ISO 9001 and OHSAS 18001: A17581 & A17582. ISO 14001 Lead auditor's courses are presented in partnership with BSCIC and INTEK.
- TUV ISO 9001: 2008 certification.
- Department of Labour: First Aid level 1-3 registered institution with number CI 413.
- Level Two, Empowering supplier B-BBEE Status.

All Advantage ACT facilitators, assessors and moderators are properly qualified and registered with extensive experience in OHS. AGO Certification employ only internationally qualified ISO9001, ISO14001 and OHSAS18001 Auditors and Lead Auditors. Steam Legal Compliance Solutions employ only qualified lawyers and advocates.

PRODUCTS

Advantage ACT is part of Pinnacle OSH Holdings which prides itself in providing a turnkey solution in the field of OHS. All companies in the group focus on their own specific role and functions to ensure clients get the best possible service.

Pinnacle OSH Holdings (Pty) Ltd provides specialised OSH services including the development and implementation of formal OHSAS 18001, ISO 9001 and ISO 14001 Management Systems.

Frontier SHEQ Consulting (Pty) Ltd provides an OHS management service to companies in all industrial sectors, including manufacturing and facility management and also acts as the OHS Agent for clients on construction projects.

Primary SHEQ Services provides OHS services to principle contractors (mining, building and civil construction projects).

Crest Occupational Safety and Health Construction Support (Pty) Ltd provide a comprehensive OHS service to sub-contractors in the construction industry.

Teano Management Services (Pty) Ltd delivers quality management services to the commercial and retail industry including development, implementation and maintenance of formal- or informal OHS Systems for tenants in shopping centres, office parks, business parks and industrial parks.

FUTURE

The management and staff of Pinnacle Holdings are all committed to saving lives and making a difference to all workers in South Africa and the rest of Africa. The services in our different focus areas will be expanded to reach as many OHS practitioners and workers as possible through our training, auditing, and OHS consultancy services on sites.

We are closely following the developments of the QCTO so that we can become a leader in that area as well as expanding our training to other means to reach as many people as possible.

NON-FINANCIAL AUDITING
- Continuous Improvement Masterclass

Duration: 2 days

Don't miss this once in a lifetime opportunity to take your auditing skills to a whole new level! This course will improve your organisation's Quality, Environment and OHS system functionality tremendously!!

This Masterclass aims to provide thoughts, awareness and understanding about "new and old" non-financial auditing methods and techniques. The facilitator will share ideas, interpretations and explanations that he has developed over his own 20 years of non-financial (mostly SHE and Cyanide Code) auditing, covering the practical aspects of successful auditing and the little hints and tips that can make auditing go easier and become more productive. Included will be a rare insight into the psychology of auditing, as well as some opportunities for participants to share what worked (and what didn't work!) for them on audits.

DATE:
24 & 25 May 2017

VENUE:
Mokoya Lodge,
Farm Hartbeesfontein 472,
Hekpoort

COST:
R 12 750.00pp excl. VAT
(includes 1 night's accommodation and 27 meals)

CONTACT:
Michelle du Toit
+27 (0) 11 396 1248
training@advantagea.c.t.co.za

Target Group

- Non-financial Lead Auditors
- Non-financial Technical Auditors
- Non-financial Auditors

PLEASE NOTE THAT WE WILL BE MOVING TO NEW PREMISES ON 1 APRIL.

Our new contact details will be:
11 Witgatboom Avenue, Glen Marais, Kempton Park
Tel No: +27 (0) 11 396 1248

All email addresses remain unchanged.



by Dr Bill Pomfret

Managing Consultant, Safety Projects International, Canada specialises in auditing and evaluating both client and contractor Safety Programmes and in developing with them pro-active preventative systems procedures and programmes to control all incidents.

Dr Bill Pomfret shares with us the details of an unusual contract he has recently been awarded.

“This is the first time I have been asked to develop safety, security and emergency response plans, and then provide training for a church. I have been left wondering how big of a problem this is in South Africa, and elsewhere in the world. Although I refer to churches in this article, it actually relates to all places of worship, for all religions” said Pomfret.

When an incident occurs at a church everyone is stunned, shocked, and surprised that evil has visited his or her most sacred place. The most common comment is, “I cannot believe it happened here” after all, nobody ever thinks bad things will come their way while praying, or they think God will protect their church. The unfortunate truth is that bad things do happen to good people, and the predators in our society know Christians are welcoming, friendly, and ill prepared for violence.

I believe God’s expectation is that we recognise the dangers we face, and take prudent action to minimise threats against us, protect our children, and protect life, criminals know there is a small chance they will be confronted by anyone who knows what to do.

Churches rightly wrestle with the balance of being an open and friendly place versus planning for security or safety concerns. Depending upon the size of your church, it is important you strike the right balance and meet the needs and mission of your particular organisation.

Ensure your church has a safety and security emergency response plan



THE EVOLUTION IN RISK AND RESPONSE: NEXT GENERATION ACTIVE SHOOTER PREPAREDNESS

How many Churches in South Africa have formal safety, security and emergency response programmes. Or, how many have trained groups in what to do in the event of such attacks which are highly dynamic, rapidly evolving situations. They happen so quickly that the shooting is usually over before the police arrive. Unlike other violent crimes, the “active” aspect inherently implies that both law enforcement personnel and citizens have the potential to affect the outcome of the event based upon their responses.

To effectively prepare for such a fast-moving and potentially devastating threats, leaders and decision-makers should be aware of the evolving risk and new approaches in mitigation.

THE EVOLVING RISK

The frequency and characteristics of these events have continued to change in scope and complexity since 9-11, in fact the rate of such incidents has tripled over the past several years as well. Leaders and planners therefore are confronted with the reality that there are more events, involving great numbers of casualties, demanding a higher level of readiness. It is important that planning efforts are aligned with the today’s Active Shooter Risks, not yesterday’s incidents and include several complicating factors, including:

- Well-trained, tactically competent, and willing-to-die perpetrators;

- Multiple operators (attackers) working in small tactical units;
- Effective internal and external communications/coordination;
- Purposeful luring of first responders to inflict even more carnage;
- Use of fire to complicate first-responder operations and cause further damage;
- Potential use of chemical, biological or radiological agents; and
- Use of high-powered military type weapons and explosives, including suicide bomb vests.

THE FIVE PRIMARY TYPES OF VIOLENCE

1. **Type 1** occurs during the commission of a property crime such as a robbery, theft or trespassing.
2. **Type 2** is the most prevalent in hospital and health care environments. In fact, health care and social service workers are four times more likely to be the victims of violence on the job than any other type of worker.
3. **Type 3** is co-worker violence.
4. **Type 4** is when violence and abuse follow a worker from home to work, it is considered “Intimate Partner Violence.”
5. **Type 5** is when the violent actor is an extremist of some sort who believes that violence is necessary, justified or deserved in their radical views. It is important that leaders

and planners understand the concept of Type 5 violence and integrate it into overall violence prevention and response strategies.

BRIEF INTRODUCTIONS

As a brief introduction to the five primary types of workplace violence:

Type 1 violence occurs during the commission of a property crime such as a robbery, theft or trespassing. In this scenario, there is no legitimate business relationship between the offender and the organisation.

The organisation or victim is selected because of the perception that there is something of value to be taken, such as cash, medications or electronics. Type 1 is most common in convenience stores, liquor stores, and gas stations, as well as taxis and limousines, where people may work late at night, all alone, and have cash on hand. This type of workplace violence is the most prevalent, and 85% of workplace homicides occur in this type of circumstance.

Type 2 violence is the most prevalence in hospital and health care environments and in fact, health care and social service workers are four times more likely to be the victims of violence on the job than any other type of worker. In instances of Type 2 violence the offender is known to the organisation as a client, customer or patient, and the violence occurs during the routine delivery of services. In some settings the risk of assault or injury by customers or clients represents a real and ongoing threat in everyday work.

The type of violence most commonly thought of as “workplace violence” is **Type 3** and occurs among co-worker-to-co-worker violence. There are many instances in which this also involves worker-to-supervisor, and in some cases supervisor-to-worker violence. In academic settings this may manifest itself as student-to-student or student-to-faculty violence. In Type 3 workplace violence the perpetrator is a current or former employee (or student) of the organisation. The motivating factor is often one or a series of interpersonal or work/school-related conflicts, losses or traumas, and may involve a sense of injustice or unfairness. Type 3 violence accounts for about 7% of all workplace homicides,

and those in positions of authority are often at the greatest risk of being victimised.

It is important to note that even workers or students who have separated from the organisation may still represent a risk of violence in some situations.

When violence and abuse follow a worker from home to work, it is considered **Type 4** or “Intimate Partner Violence.” It is important for employers to recognise that violence and abuse at home are not just personal problems; they can and do intrude into the workplace, sometimes violently with tragic consequences. There are many cases each year, often involving multiple victims, when a former spouse or partner brings their violence or aggression to their partner’s workplace. The perpetrator may know their partner’s work hours, parking location or other information that may make them vulnerable.

The risk of violence increases significantly when one party attempts to separate from the other.

Type 4 violence is typically a spillover of domestic violence into the workplace and refers to perpetrators who are not employees or former employees of the affected workplace. Women are more often targets. Hospital and health care environments may be particularly vulnerable to Type 4 violence since the workforce is likely to be predominantly female.

Lastly, in instances of **Type 5** violence, the violent actor is an extremist of some sort who believes that violence is necessary, justified or deserved in their radical views. In such cases violence is directed at an organisation, its people and/or property for ideological, religious or political reasons.

Violence perpetrated by extremist environmental, animal rights, and other value-driven groups may fall within this category.

In Type 5 violence, target selection is not based on a sense of personal or professional injustice in the workplace, but rather rage against what the targeted organisation does or represents. Hate crimes and terrorism are examples of Type 5 violence especially when they are directed against an organisation and its employees.

TRAINING POINTS

1. Does your church have a policy in place for who is allowed to carry firearms in church?
2. If you discover a church member carrying a firearm unlawfully, what is your church’s position in pressing charges against that member?
3. How will your team/leadership handle the situation should it arise?
4. It appears many people (other than security personnel) do not understand self defense law.

The law does not protect you if you involve yourself in a situation, cause an escalation of violence, and then shoot the person and claim self defense.

Do you know self defense law for South Africa?

5. If your team intervenes in a disturbance, should you have a team member stay close and monitor the situation?
6. I’m sure the last thing anyone thought about was an armed church member displaying a badge and drawing a firearm.
If they had a team member close by, could he have read the situation, intervened and prevented a disaster?
7. Does your team have medical equipment and training ready to go in case of a serious injury like a gunshot wound?
8. There are interventions available for a gunshot wound that can make a difference in survivability. Does your team have medical supplies readily available for any kind of medical emergency?
9. What kind of training do you do to de-escalate volatile situations? In any situation there are bad, good, better and best solutions to solving a problem, does your team have the ability to assess and de-escalate a situation?
10. Do church members know there is a security team in place who will handle situations?

Have your church members been advised to allow the team to handle volatile situations?

Water has its limitations

The alternative solution to emergency decontamination

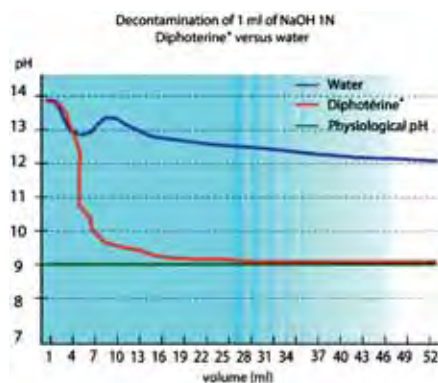
One way to enhance your company's Chemical Accident Response Management programme while safeguarding your employee's well-being is by using the next-generation chemical splash treatment: Diphoterine® Solution.

History has shown that the traditional use of water as a means of emergency decontamination, whilst beneficial, has its serious limitations.

Chemical burns, depending on the concentration and the duration of the contact, can have irreversible and catastrophic consequences. Diphoterine® provides a solution that can be more effective than current practices and if used in accordance with the correct protocol can eliminate injuries.

WHAT IS DIPHOTERINE® SOLUTION?

Although relatively new to South Africa, Diphoterine® Solution is a proven product that has been used extensively throughout Europe for more than 20 years and has been shown to have a beneficial action on over 1 000 different chemicals to date. Furthermore, the French manufacturer, Prevor, has world class laboratories that are able to test products



currently not listed amongst the chemicals already analysed to enable you to have a single washing protocol for all chemicals on site.

HOW IT WORKS

Diphoterine® has a chelating and neutralising action on chemical splashes to the eyes and skin.

It is a hypertonic, amphoteric, polyvalent washing fluid that rapidly attracts and absorbs harmful molecules.

BENEFITS

The main benefits of rinsing with Diphoterine® Solution:

- Diphoterine® is a polyvalent product capable of stopping 6 types of chemical reactions caused by spills of:
 - ◆ Acids* and bases
 - ◆ Oxidising and reducing agents
 - ◆ Chelating agents
 - ◆ Solvents
- Diphoterine® will stop the penetration of the chemical, unlike water or saline, which only dilutes and in some cases, may react with the chemical

Diphoterine® Solution should be used as soon as possible upon chemical exposure and in sufficient volume.

As the Diphoterine® Solution rapidly relieves pain, it is important to finish the entire course of the unit used for a specific body-part as it contains the total appropriate volume to decontaminate an area.

DECONTAMINATE THE SKIN

To decontaminate the skin, there are different sizes of sprays according to the splash surface (action within 60 seconds of contact):

- **Entire Body:** DAPD - a 5 litre autonomous portable shower
- **Limb or Torso:** MINI DAP - a 200ml spray can
- **Hand or Face:** MICRO DAP - a 100ml spray can.

For decontamination of the eye:

- **Action within 10 seconds:** LIS - a 50ml portable eyewash
- **Action within 60 seconds:** LPMD - a 500ml eyewash.

IDEAL USES

Diphoterine® Solution can dramatically reduce workplace injuries.

The solutions are ideal for personnel working in the mining, chemical manufacturers, oil refining, pharmaceutical, food producers, laboratories - any industry using corrosive and/or irritant chemicals.

Diphoterine® Solution is available in South Africa exclusively through Prism Inter Africa.

IMPORTANT - NOTE: For risks concerning hydrofluoric acid and its derivatives, it will be necessary to use Hexafluorine® Solution. Please contact us for more information.

To read research papers, specific chemical laboratory tests, and testimonials please visit www.prevor.com

For more information on how to reduce workplace injuries with Diphoterine® Solution contact us on enquiries@prismia.co.za or call 076 404 1885



Speedy resolutions to emergency situations

Our lives are run by apps. We have apps for weather, banking, social media, diets etc., but how many of us have apps for EMERGENCIES?

South Africa is a high-crime country, and this is the one app that we should all have on our phones.

The Mobi-Claw app has now been available for over 15 months and covers all emergencies. With only one tap on your phone, the correct emergency will be dispatched to your assistance within seconds.

In times of emergency, most of us would become flustered and not remember the correct emergency telephone number. With this app, you don't have to remember any number.

Hundreds of emergency service providers, nationwide have signed up to join this system - be they police, fire fighters, ambulance attendants etc. They have all been verified and are dedicated to helping the nation.

I sat for an hour with Mike Myers and Paul Stone, Directors of the company,

and within that time 2 emergency calls came in. Within seconds of the alarm going off, service providers who are in the area sign-in to indicate they are on standby. Once the nature of the call has been determined, the correct assistance is dispatched to the subscriber. This is monitored until the incident has been resolved.

This is a service that everyone should consider joining, especially if you have a

family - not only for medical emergencies, but also for crime which we are all constantly exposed to.

We all know that in the event of a break-in, we are all resistant to phoning the SAPS, and rather phone our private security companies which we hope will respond quickly, whereas Mobi-Claw will make sure someone is dispatched immediately, and follow-up to make sure that you are being helped.

ON THE JOB CASE STUDY



A subscriber to the system was recently at an Italian restaurant, when the person making the pasta, got her fingers caught in the pasta making machine. The subscriber immediately tapped her Mobi-Claw app. Once the nature of the incident was determined, the correct emergency services were dispatched. In this case, the fire services with their "jaws of life" freed the woman's hand from the pasta maker. The paramedics then stabilised her and the ambulance transported her to hospital.

The successful resolution to this situation was all thanks to a Mobi-Claw subscriber being at the right place, at the right time. After being witness to the swift outcome, several bystanders immediately signed up to the app.

For further information go to www.mobi-claw.com

Emergency first aid for chemical splashes to the eyes and skin

DIPHOTERINE® Solution highly effective on all chemical reactions:

- Acids* & Bases
- Oxidizing & Reducing Agents
- Chelating Agents
- Solvents

***HEXAFLUORINE®** Solution is specifically formulated for Hydrofluoric Acid



98% Sulphuric Acid Accident

This photo was taken 2 days after a 98% Sulphuric Acid splash to the face washed with DIPHOTERINE® Solution.



www.prismia.co.za | 021 823 6809 | enquiries@prismia.co.za

Exclusive Distributor of **PREVOR** Products

SAMED chemical company

Registered on the **AfriTox®** Database



PRISMIA
PRISM INTER AFRICA ••• CHEMICAL SAFETY

News from SAIOH

Report from the SAIOH President and Council Members

The SAIOH Strategy Session 2017 was held at SAIOH's Head Office in Broadacres on 27 January, where the SAIOH five-year strategic plan, mission, vision and values were revisited to ensure that planned and ongoing activities remain aligned with SAIOH key objectives.

The SAIOH key objective for 2016, to "Build Capacity", speaks to the restructuring of the branches which is still in progress and will be carried over to 2017.

SAIOH's mission statement for 2017 is "To entrench excellence and competence for Occupational Hygiene professionals", and SAIOH is in the process of developing some offerings for its members in terms of training in various facets of occupational hygiene. These initiatives will be communicated to interested parties in due course.

SAIOH REFRESHER - TAKING A CAREER BREAK FROM OCCUPATIONAL HYGIENE

The members of the Professional Certification Committee (PCC) continue to develop new procedures to ensure that all potential situations are covered, and aim to answer member queries as comprehensively as possible.

One question that the PCC regularly receives relates to SAIOH membership and Continuing Professional Development (CPD) points when one retires or takes a career break.

The following procedure is detailed in the SAIOH chapter and guide on CPD points:

Career Breaks

SAIOH is mindful that members may find themselves out of work for a period of time, may opt to take time out of the occupational hygiene profession, or may retire from full time practice.

If SAIOH members, regardless of their designation/certification level, want to pursue interests in another field, plan to take full or semi-retirement, or are unemployed for a period of time, they

must formally notify the SAIOH Administration Office of their intent to "suspend" their membership so that notice is made on their profile.

The member can resign his/her registration and remain an unregistered or general SAIOH member, but will need to re-sit the certification assessment later if he/she wants to re-enter the profession.

However, if the member wishes to stay registered during this period (not actively practising occupational hygiene on a full-time basis), he/she is required to pay the annual membership fees, thus ensuring that they are not suspended due to outstanding fees.

In terms of CPD points, the following applies:

For each designation/certification type, there is a requirement for a certain number of CPD points to be achieved within a five-year period. Hence, if members are not active for a certain period of time, they still have the opportunity, during their active years (within the designated five-year period), to ensure that the "missing" points are obtained.

CPD points can also be achieved by "stock piling", bearing in mind that there is a maximum number of points that can be achieved each year.

Members may still need some points to ensure that they do not lose their professional registration in the coming years. Members would therefore need to participate in occupational hygiene activities to make up the deficit in the total number of CPD points required.

Examples of such activities are attending local branch meetings, mentorship support, participating in online quizzes, and writing questions for the assessment database.

These activities enable the allocation of a few CPD points towards the total number required in a designated five-year period, for each year of non-practice.

Members are reminded that they are

still required to keep their Personal Learning Portfolios (PLPs) up to date.

Members may be absent from occupational hygiene practice for a maximum of two years. If members do not formally advise SAIOH that they have been re-employed in an occupational hygiene role, their professional membership will be revoked and downgraded to general membership.

All normal fees will be payable during the non-practice period to retain professional registration status.

Non-payment of fees will lead to membership status being revoked.

SAIOH SUPPORTS A-OSH EXPO 2017

SAIOH will be participating in and exhibiting at A-OSH Expo 2017, Africa's leading occupational health and safety exhibition, which will be held from 30 May to 1 June, at the Gallagher Convention Centre, Johannesburg.

SAIOH ANNUAL CONFERENCE 2017

Please make a note of the dates of the SAIOH Annual Conference: **25 to 27 October 2017**, at a venue in Gauteng (to be advised).

Submission by:

Kenneth Hlungwane, SAIOH President 2017

Julie Hills, SAIOH Vice President 2017

Kate Smart, SAIOH Chief Administrative Officer

Claudina Nogueira, SAIOH Council Member Portfolios: Liaison and Communication & Marketing



E-mail: info@saioh.co.za
Tel: + 27 71 672 491
Website: www.saioh.co.za

SAIOH PROGRAMME 2017

SAIOH has finalised the dates and times for the Council, Liaison Forum and the Department of Labour (DoL) Liaison meetings for 2017, which are indicated below.

Meeting	Venue	Date and Time
SAIOH-DoL Liaison	SAIOH Head Office, Broadacres	Thursday 30 March, 11h00-13h00
SAIOH Liaison Forum	SAIOH Head Office, Broadacres	Thursday 30 March, 13h30 -15h00
SAIOH-DoL Liaison	DoL Head Office, Pretoria	Monday 5 June, 12h00 -14h00
SAIOH Liaison Forum	SAIOH Head Office, Broadacres	Friday 14 July 11h00 -14h00
SAIOH-DoL Liaison	DoL Head Office, Pretoria	Friday 22 September, 12h00 -14h00
SAIOH-DoL Liaison	SAIOH Head Office, Broadacres	Friday 1 December 11h00 -13h00
SAIOH Liaison Forum	SAIOH Head Office, Broadacres	Friday 1 December, 13h30 -15h00
SAIOH Council Meetings	SAIOH Head Office, Broadacres	Friday 31 March, Friday 26 May, Friday 4 August, Friday 30 November, 09h00 - 15h00

INTRINSICALLY SAFE LIGHTING SOLUTIONS

UK Underwater Kinetics

vizion HELMET MOUNT

The most lightweight hands-free lighting solution available

3AA - the most compact light in its class with superior LED Technology, Lightweight, Affordable and Waterproof

INTRINSICALLY SAFE

www.vanguardfire.co.za
Tel: +27 31 564-3200 / Tel: +27 41 451-2461
Email: info@isscc.co.za

VANGUARD FIRE & SAFETY

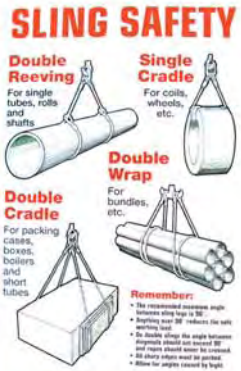


Tel: +27 11-701-5054
 Fax: 086 684 2664
 Email: admin@safety1st.co.za



POSTERS FROM THE SAFETY FIRST ASSOCIATION

YOUR HEALTH
YOUR SAFETY
YOUR RESPONSIBILITY!



Around the world in 4 months

With only a few months into the new year, and already too many accidents are happening around the world. Here are just a few to consider.

SOUTH KOREA

A working mother died at the workplace shortly after resuming 12-hour workdays following her maternity leave. She had returned from maternity leave only a week before her death and immediately went back to working 12-hour days.

She returned to the office on the Saturday. The next day, she was there again at five in the morning to finish early and take care of her children later in the day when she suffered a fatal heart attack.

Her death has prompted soul-searching over the difficulties faced by overburdened and exhausted working mothers in a deeply workaholic and male-dominated society.

CANADA

A 51-year-old man died after falling from the third floor of a building under-construction. A piece of plywood lifted by a strong gust of wind slammed into him. The impact pushed him over a railing.

The family are now motivating that tethers must be mandatory for all workers and site closures during extreme weather.

AUSTRALIA

Melbourne

A 65 year old delivery driver died when he was run over by his truck at a storage depot in Tullamarine. He was believed to have been at the rear of his vehicle at the time of the incident.

A farmer suffered serious head injuries when he was struck by a tractor while undertaking maintenance work on his farm. He later died in hospital.

Victoria

A bakery in Altona North was fined

\$40,000 after a worker's fingertips were amputated by a machine while he was filling pastries with custard. The court found that the company failed to provide and maintain a safe plant and failed to provide appropriate information, instruction, training and supervision. The court heard that one of the worker's tasks was to manually refill the machine because the filler pump was broken. The court was told that the company was aware the machine had been malfunctioning all day and decided to keep it in operation. After noticing that the custard was not dispensing equally into the pastry casings, the worker reached into the machine to clear a blockage. His hand became stuck and the tips of three of his fingers were amputated.

A 69-year-old man who suffered critical head injuries after falling four metres at a construction site at Merricks North on the Mornington Peninsula died in hospital from his injuries.

A 52-year-old worker was crushed by a load of steel which fell from a forklift at a scrap metal yard at Foster in South Gippsland.

Queensland

A man at a meat works had his head caught in cattle ramps. The worker was rushed to hospital with head and facial injuries.

MALAYSIA

Kuala Lumpur

One worker was killed and another injured following an accident at the Semantan work site of the Mass Rapid Transit (MRT) line. The workers were on the ground assembling reinforcing bars cage. During the assembly, the tie gave way. The rebars (cluster of long steel rods each weighing 40kg) fell and hit the workers killing one.

UNITED STATES

Arlington

The Mine Safety and Health Administration issued a Fatal Accidents

Alert in response to the deaths of two miners that occurred within 24 hours of each other. Both fatalities involved miners working alone in restricted areas with hazardous conditions. In the first incident, a miner was found in an underground limestone mine under material that had fallen from a rib pillar. The area of the mine in which the incident had occurred was barricaded from entry due to poor roof and rib conditions, according to MSHA. One day later, a miner was found entangled near a conveyor belt drive in a coal mine.

Chicago

Orlando Park firefighters responded to an emergency call when a man's fingers had been caught in a food meat grinder. The accident happened as the man, a grocery store worker was processing meat. Firefighters on the scene couldn't free the man without causing more injuries to his hand. Instead, the first responders set to work disassembling the machinery down to its smallest component so the man could be taken to the hospital. The fire crew then assisted the emergency room staff at the hospital by using a mini version of the Jaws of Life.

Maryland

A serious construction accident resulted in the death of a 19-year-old construction worker. The female employee was working in a 4.5-metre hole when she was crushed by a backhoe's digger. The operator of the backhoe was unaware that the other worker was in the hole at the time he dropped the machine's apparatus.

Missouri

A worker died in an accident on a highway construction site. A 38-year-old Missouri man was at the job site in Minnesota helping unload a large metal pipe from the trailer of a truck. For reasons that are unclear, the 1155kg pound pipe became dislodged and fell on top of him. Workers administered first aid immediately until paramedics arrived. However, the worker was pronounced dead shortly thereafter.

New styles for the Rebel range of work boots

A trusted brand for more than a decade

REBEL Work Boots have been a trusted benchmark in safety footwear for more than a decade, incorporating a range of quality, styling and safety features with refined design for exceptional comfort and durability.

With ISO 20345 and SABS certification, the REBEL range provides protection and satisfaction to customers across Southern Africa. We have been hard at work designing and developing some new styles for you.

FX2 CHELSEA BOOT

An attractive addition to the ever-popular FX2 range, now with a steel midsole and great pricing.



NEW RIGGER BOOT

A tough, metal free, water resistant Rigger Boot, to take on the harshest risks that the oil industry can throw at it.

It is heat resistant too.

What more could you ask for?



CLASSIC CHELSEA BOOT

A new level in fashionable safety footwear, with a distinctive low profile formal boot with a sleek look.

A versatile option in our Classic work boot range available with or without steel toe-cap, in black and brown.



NEW LADIES CHELSEA BOOT

Expanding on our focused ladies range of safety footwear, the brand new ladies Chelsea offers a capable work boot with a glamorous touch.

We can't wait to see the response for this one...



JIGGA BOOT

Now re-engineered to protect against arc-flash and high-voltage risks, as well as high heat environments.

The new Jigga is now completely metal free, providing extra assurance in high-voltage environments.



NEW LADIES LIGHT INDUSTRIAL SHOE

Lightweight, sturdy and hi-tech.

A lady's shoe that will grace any office or factory floor.



We hope that you have as much fun wearing them, as we had designing them!

To explore our full range visit us online: www.rebelsafetygear.com

Visit us at A-OSH Expo 2017 where we'll be showcasing our current and new range.



TRUSTED

— SINCE 2004 —



CHUKKA

THE BENCHMARK IN QUALITY
www.rebelsafetygear.com

REBEL
SAFETY GEAR



uvex

Optimized Grip when working with oils

uvex rubiflex S XG

Good grip is essential in many environments. This also applies to hand protection as poor grip results in un-necessary exertion, unsafe working and increased risk of injury. The innovative uvex Xtra Grip Technology effectively and safely solves these problems.

Effective grip - high flexibility - outstanding wearer comfort

The lightweight chemical-resistant safety glove RUBIFLEX S XG with innovative uvex Xtra Grip Technology combines protection and grip with exceptional comfort and flexibility. Supported chemical protection safety gloves offer outstanding wearer comfort through top-quality cotton interlock lining, which is comfortable on the skin and regulates temperature inside the gloves.

 Xtra Grip



MADE IN GERMANY 



uvex Safety products conform to EN and SABS Safety Standards

SOUTH AFRICA

DURBAN Tel: (031) 569 6780
Fax: (031) 569 6781
e-mail: info@uvex.co.za
uvex.co.za

PRETORIA Tel: (012) 345 6656
Fax: (012) 345 6663
e-mail: safety@uvex.co.za

uvex.co.za

protecting people